

DB20K2-X

DESCRIPTION

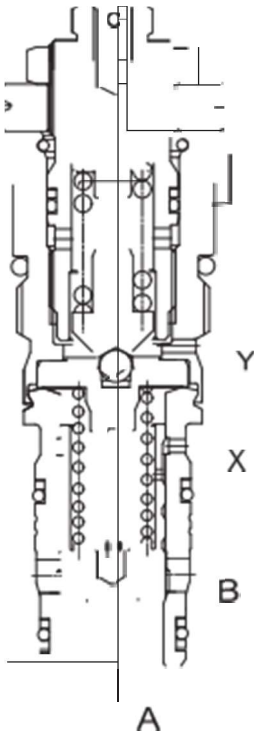
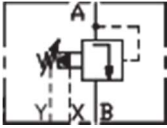
A cartridge-style pilot-operated poppet-type relief valve with an external control port

OPERATION

The valve with spring chamber port “Y” external drain, prevents flow from port “A” to port “B” until pressure at port “A” exceeds the set crack pressure and opens the pilot section. The pilot flow creates a pressure differential across the poppet which causes the valve to open allowing flow from port “A” to port “B” protecting the circuit from over pressurization;

With Port “X” connected to tank(usually controlled by a solenoid directional valve),the valve can be converted in such a way that it is capable of being electrically to nonv pressurized circulation.(main piston is open).

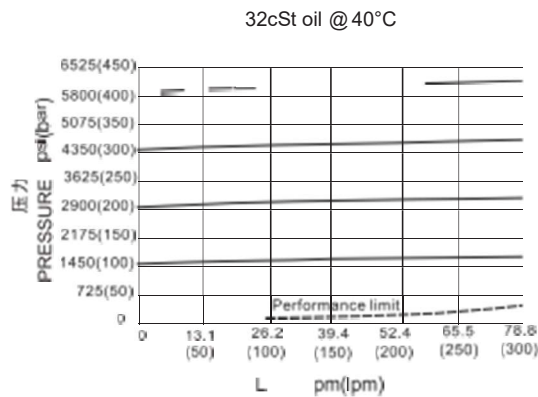
SYMBOL



SPECIFICATIONS

(Max.Operating Pressure):	350bar
(Flow):	250L/min.
(Reseat Pressure):	85% of crack pressure 开启压力 (crack pressure at 0.95 lpm /0.25 gpm)
(Temperature):	-40°F to +250°F (-40°C to +120°C)
(Filtration):	See page N-1
(Fluids):	Mineral-based fluids with viscosities of 7.4 to 420 cSt.
(Cavity):	20K2, See page M-11
(Body Material):	Steel & Ductile iron rated to 350bar350Bar

PRESSURE DROP VS.FLOW



TO ORDER

DB 20K2 - X - * / * * - * *

1 2 3 4 5 6

1 DB
Pilot-operated Cartridge Relief Valve

4 **Adjustment**
K= Ø30 Dia Knob (Omit for
10" Hex Allen head)

6 **Body Porting**
Blank= None
8T=SAE 8
10T=SAE 10

2 **Size**
20K2=20K2

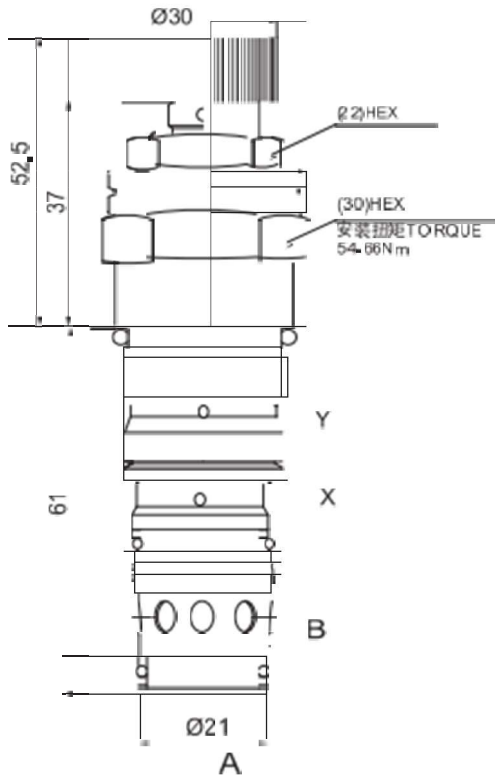
5 **Setting In Bar**
Blank= Preset
Example:0250=250bar

Other Porting is Available

3 **External Pilot Port**

INSTALLATION DIMENSIONS

Unit=Millimeters



Hidrosam Hidropar Hidrolik Pnömatik Elektrik San.Tic. Ltd
Alaaddinbey mah. 623 sok. Şam 1 plaza B blok No:2/d Nilüfer/BURSA TURKEY

Tel:+90224 441 8877 Fax:+90224 441 0333

info@hidrosam.com www.hidrosam.com