

Hydro-electric pressure switches type HED 1 are piston pressure switches.

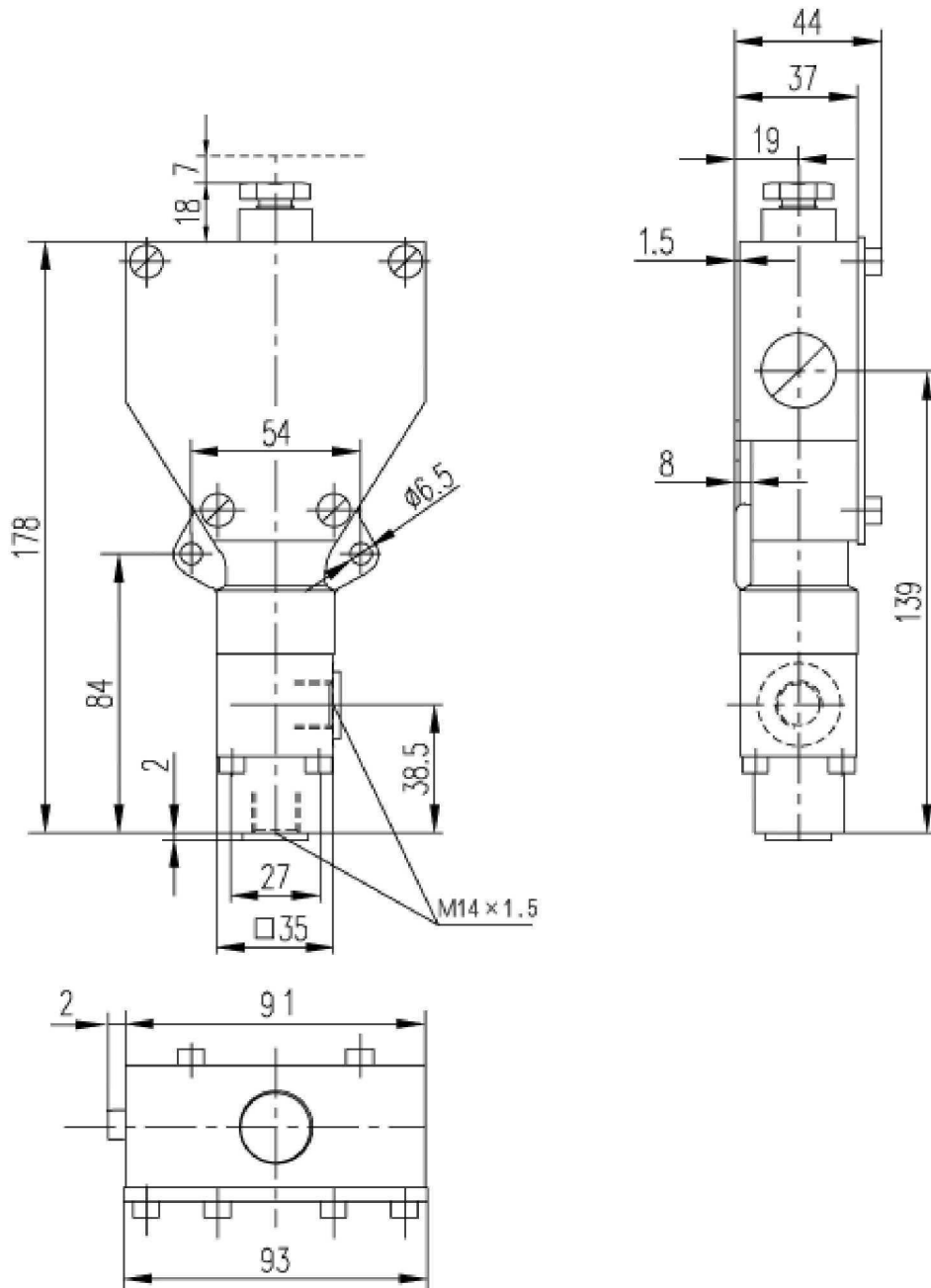
Type HED 1 pressure switches have the task of switching on or off an electrical circuit dependent on pressure. The live electrical terminals are covered by an isolating strip.

Adjustment of the switching pressure

To adjust the switching pressure, the name plate must first be removed and the locking screw loosened. The switching pressure is set by rotating the adjustment screw. Finally, the adjustment screw must be secured by the locking screw and the name plate refitted.



illuminate



Ordering code

HEDI		A	40							*
------	--	---	----	--	--	--	--	--	--	---

With drain port = K
Without drain port = O

Series 40 to 49 = 40 (40 to 49: unchanged installation and connection dimensions)

Further details in clear text

No code = Mineral oil
V = Phosphate ester

No code = Standard model without intrinsically safe circuit

HED 1 K	max. adjustable pressure 10 MPa = 100 max. adjustable pressure 35 MPa = 350 max. adjustable pressure 50 MPa = 500
HED 1 O	max. adjustable pressure 5 MPa = 50 max. adjustable pressure 10 MPa = 100 max. adjustable pressure 35 MPa = 350

No code = Without lamp
L 24 = Lamp for 24 V (20 V to 35 V)
L 110 = Lamp for 110 V (90 V to 130 V)
L 220 = Lamp for 220 V (180 V to 240 V)

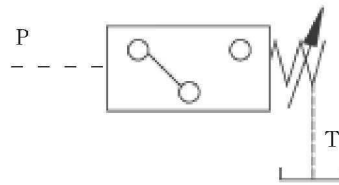
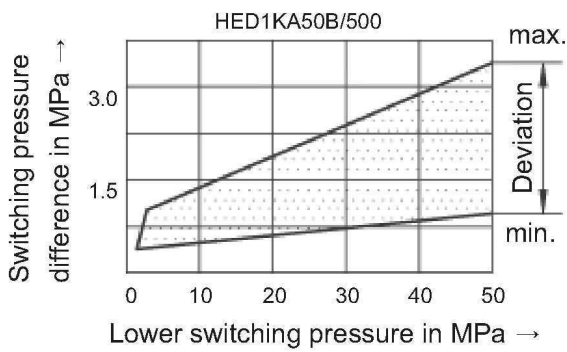
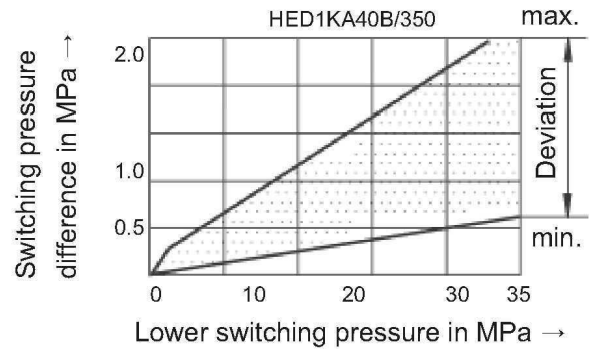
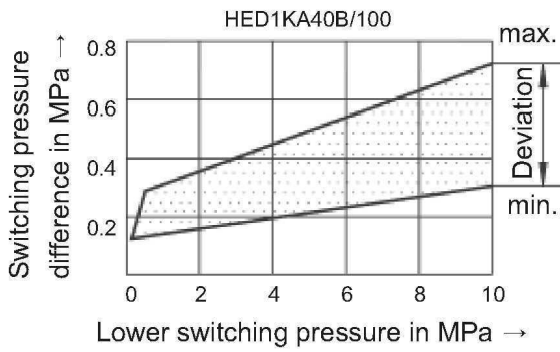
No code = Cable gland

Technical data (for applications outside these parameters, please consult us!)

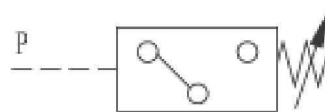
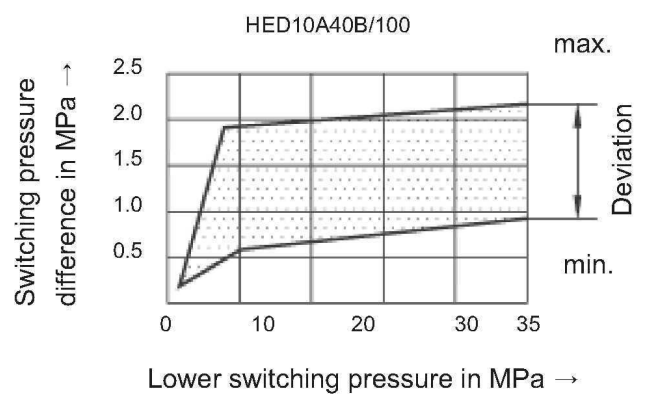
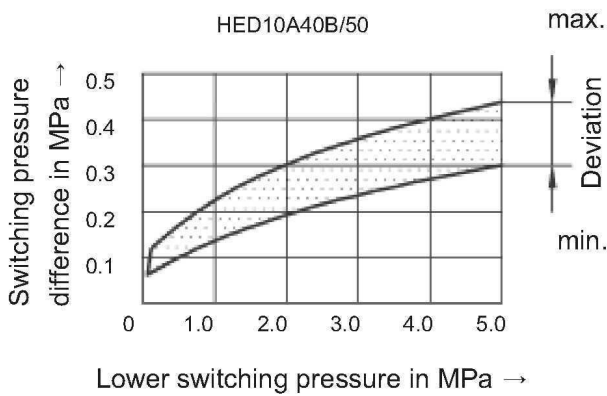
Pressure fluid	Mineral oil or Phosphate ester				
temperature range	(°C)	-30 to +80			
Viscosity range	(mm ² /s)	10 to 800			
Switching accuracy (repeatability)	< ± 2 % of set pressure				
Switching frequency	HED1KA40B/..	up to 300 cycles/min			
	HED10A40B/..	up to 50 cycles/min(briefly also... 100cycles/min)			
Pressure at drain port	(MPa)	up to 2			
Settable ranges for HED 1 KA 40B/..	(MPa)				
Pressure rating	Max. operating pressure briefly	Recovering pressure		Action pressure	
		min.	max.	min.	max.
10	60	0.3	9.2	0.6	10
35	60	0.6	32.5	1.0	35
50	60	1.0	46.5	2.0	50
Settable ranges for HED10A40B/..					
Pressure rating	Max. operating pressure briefly	Recovering pressure		Action pressure	
		min.	max.	min.	max.
5	8	0.2	4.5	0.35	5
10	35	0.3	8.2	0.8	10
35	35	0.6	29.5	2.0	35
Electrical connection	cable gland				
Contact loading	- AC voltage	460V; 15A			
	- DC voltage	40V; 1.0A / 125V; 0.4A / 250V; 0.2A			
Insulation to DIN 40 050					
Weight	(kg)	1.2			

Switching pressure difference - pressure switches with or without drain port

With drain port



Without drain port



Notice

1. The fluid must be filtered. Minimum filter fineness is 20 μm .
2. The tank must be sealing up and an air filter must be installed on air entrance.
3. Products without subplate when leaving factory, if need them, please ordering specially.
4. Valve fixing screws must be high intensity level (class 10.9). Please select and use them according to the parameter listed in the sample book.
5. Roughness of surface linked with the valve is required to $\sqrt{0.8}$.
6. Surface finish of mating piece is required to 0.01/100mm.