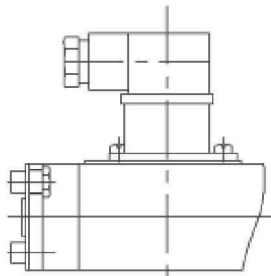
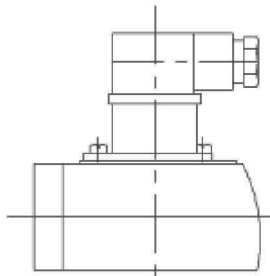
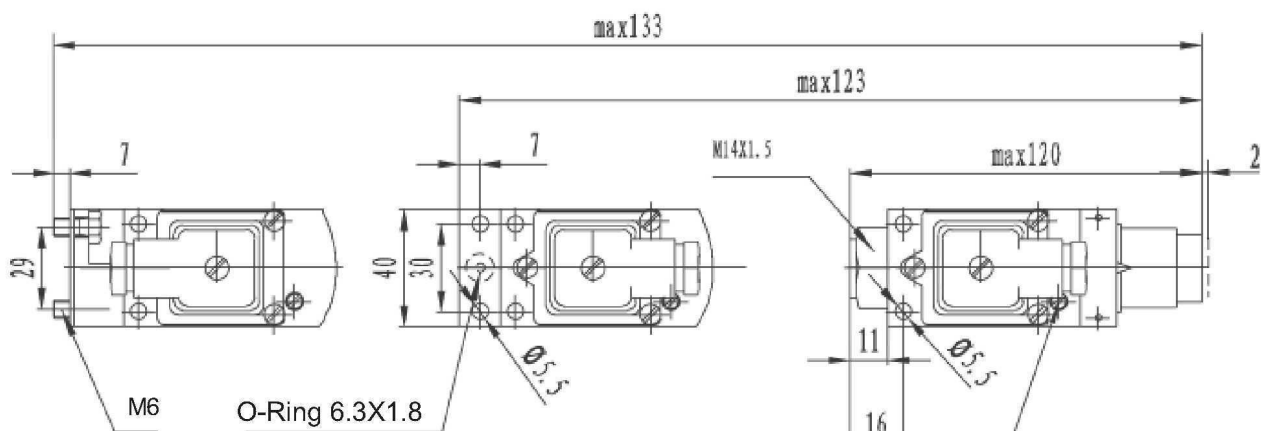
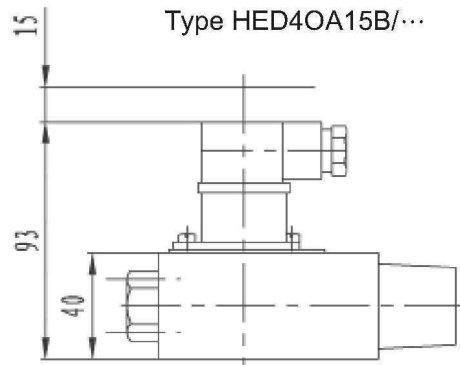


Features:

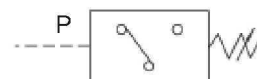
- For subplate mounting
- For pipe installation
- 3 pressure stages
- Plug-in connector with circuit (indicator lamp)
(separate order)


Features

 Vertical stacking systems
 Type HED4OH15B/...

 Subplate mounting
 Type HED4OP15B/...

 Pipe installation
 Type HED4OA15B/...


screw is loosened before adjusting pressure

screw is screwed down after adjusting pressure



Ordering details

HED40		15				S	*
Vertical stacking systems	= H						Further details in clear text
Subplate mounting	= P						
Pipe installation	= A						
Series 15(10 to 19: unchanged installation and connection dimensions)	=15						
Max. settable pressure 5 MPa	= 50						
Max. settable pressure 10 MPa	= 100						
Max. settable pressure 35 MPa	= 350						
connected by small plug	=Z14						
Lamp for 24 V (25 V to 35 V)	= L 24						
Lamp for 110 V (90 V to 130 V)	= L110						
Lamp for 220 V (180 V to 240 V)	= L220						
with protective cap	=S						
Mineral oil	= No code						
Phosphate ester (other seals on request)	= V						

*Should be orderd separately for horizontal stacking

Technical data (for applications outside these parameters, please consult us!)

Pressure setting range (MPa)

Pressure stage	Max. operating pressure	Recover pressure		Action pressure	
		min.	max.	min.	max.
5	10	0.2	4.6	0.4	5
10	35	0.3	8.9	0.8	10
35	35	0.6	32.2	2	35

Viscosity range 10 to 800mm² /s

Switching accuracy (repeatability) < ± 1% of set pressure

Switching frequency 120/min

Max. connection cross sectional area 1.5mm²

Contact loading - AC250V;5A

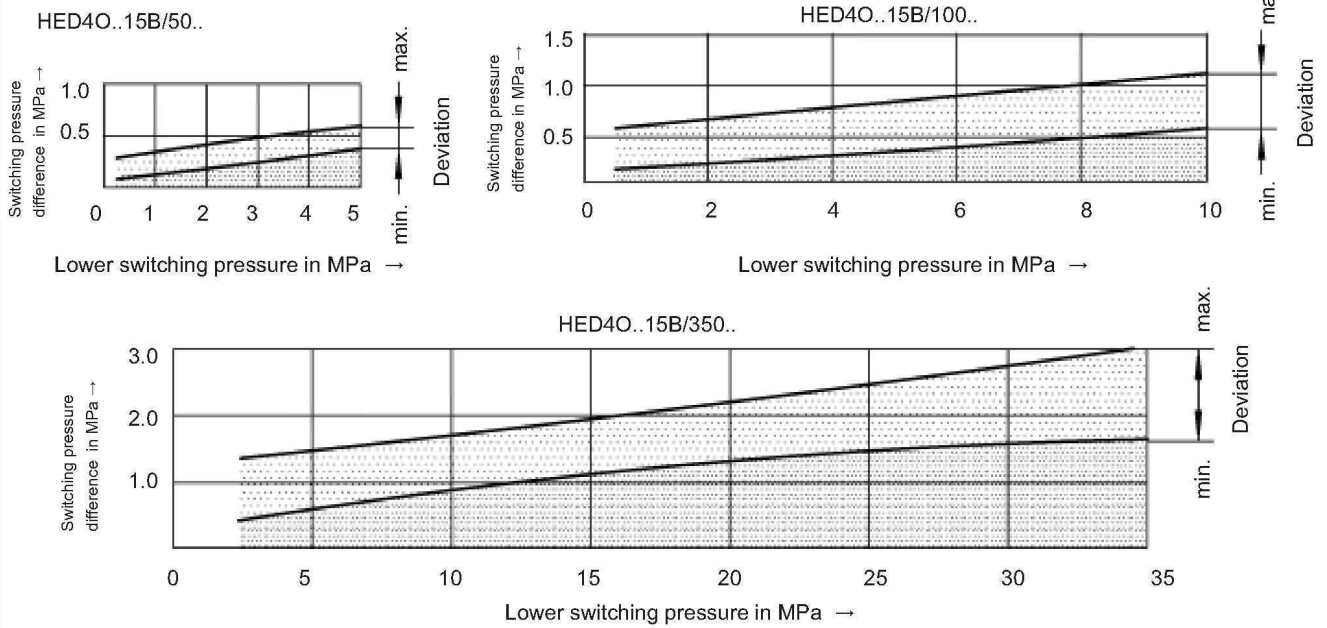
- DC50V,1A or 250V,0.2A

Weight - Hydro-electric pressure switches 0.6Kg

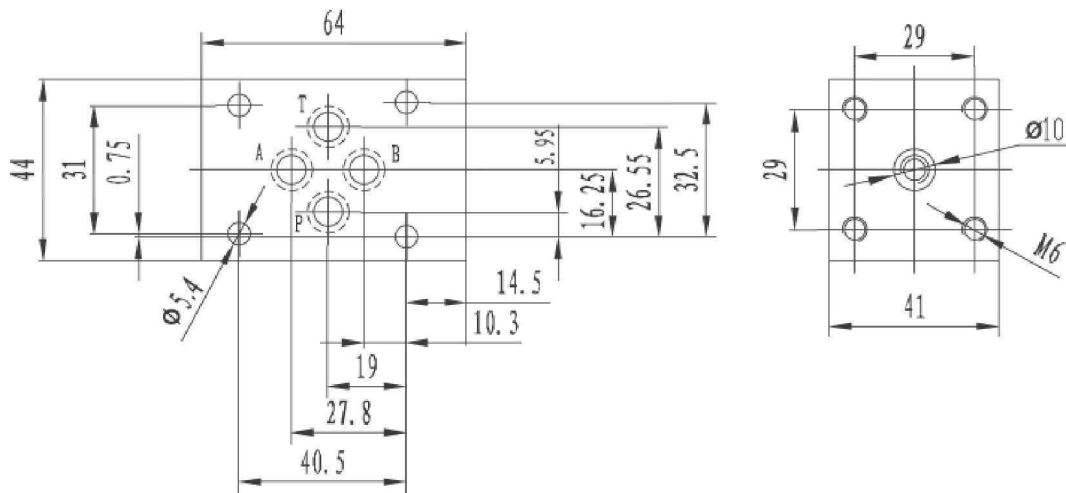
- Sandwich plate for vertical stacking assemblies

0.8kg (Size 6), 1.9kg (Size 10)

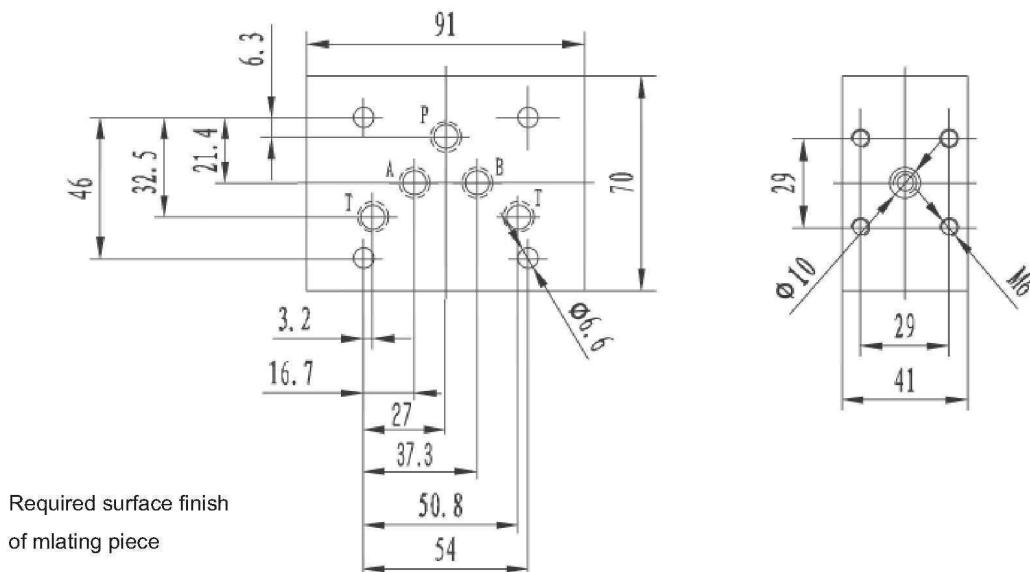
Switching pressure difference - pressure switches with or without drain port



Installation guidelines: for applying the pressure switch HED 4...in stacking assemblies size 6 (Dimensions in mm)



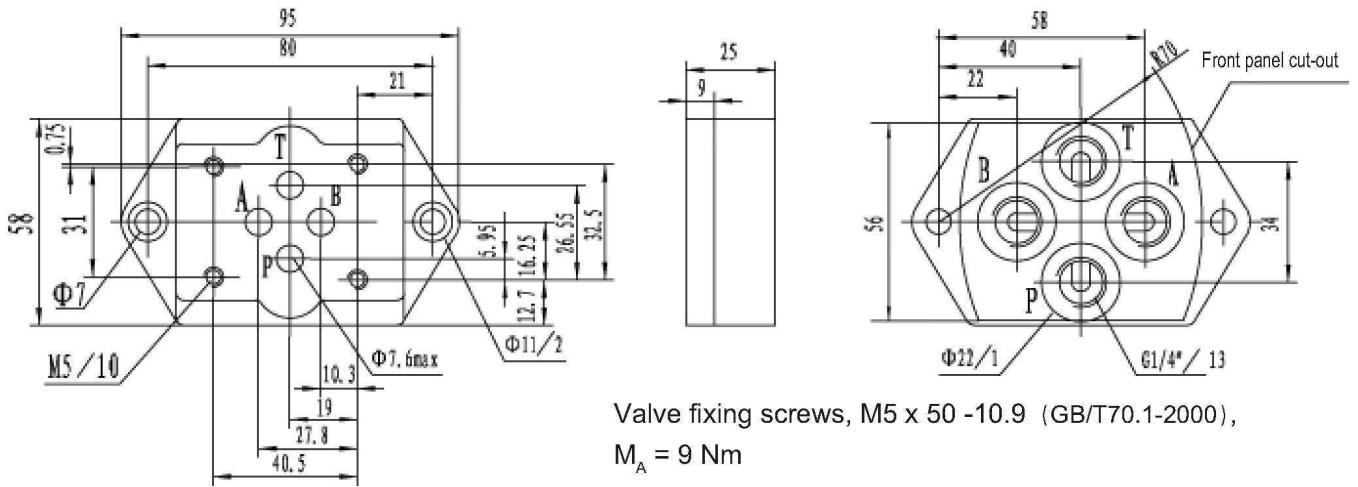
Installation guidelines: for applying the pressure switch HED 4...in stacking assemblies size 10 (Dimensions in mm)



Subplates

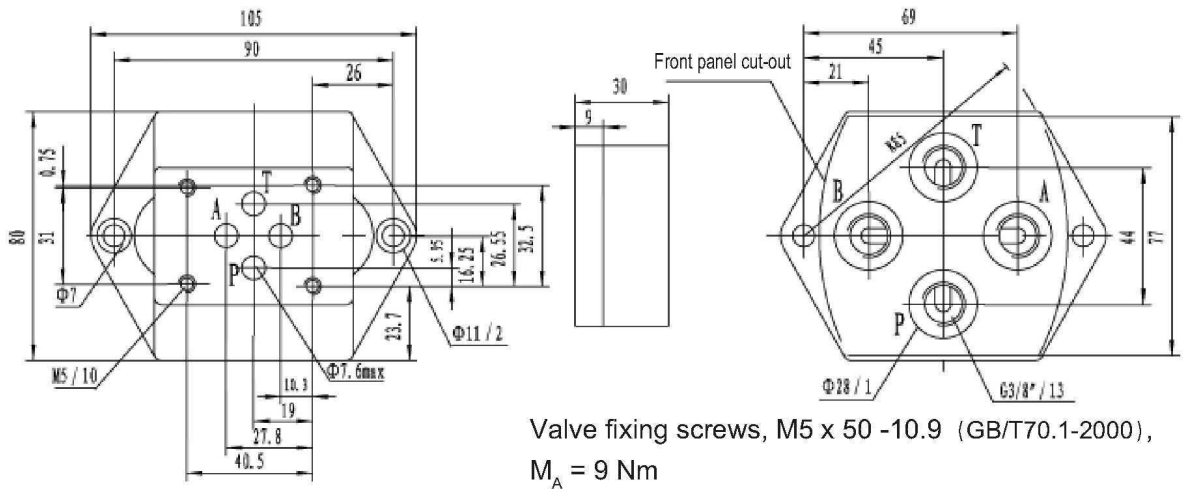
G341/01 (G1/4") G341/02 (M14x1.5) Weight ≈ 0.6kg

(Dimensions in mm)



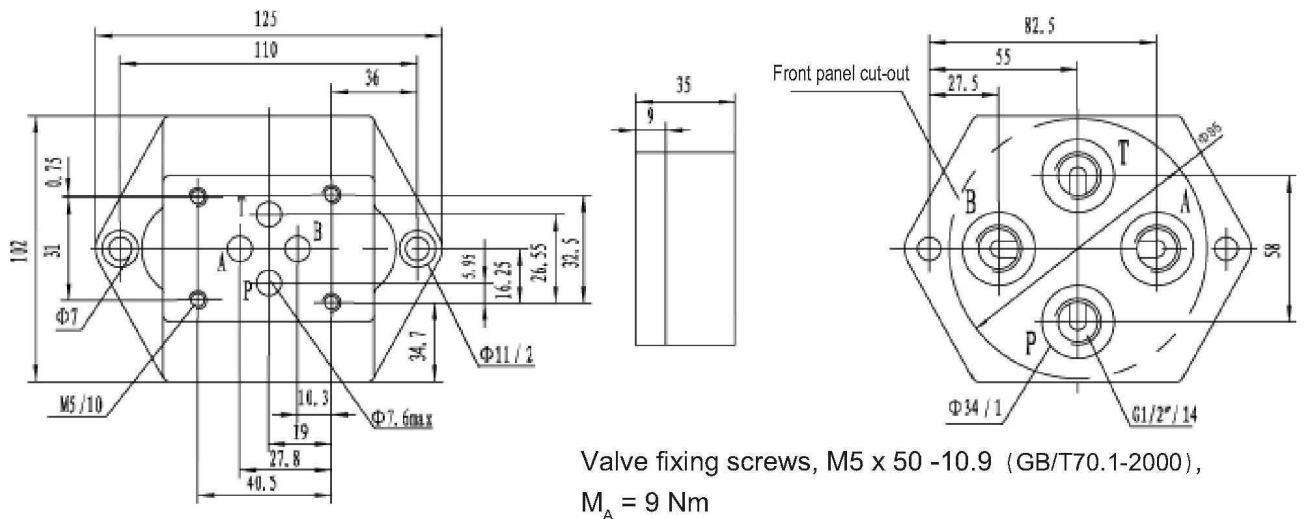
G342/01 (G3/8") G342/02 (M18x1.5) Weight ≈ 1.1kg

(Dimensions in mm)



G502/01 (G1/2") G502/02 (M22x1.5) Weight ≈ 1.9kg

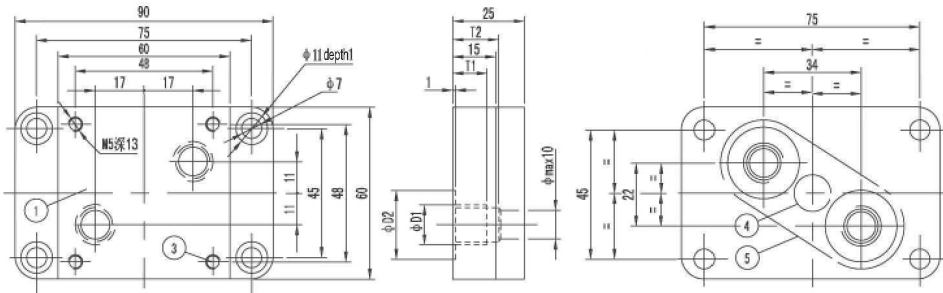
(Dimensions in mm)



Subplates

G44/01(G1/4) G44/02(M14 × 1.5) G45/01(G1/2) G45/02(M22 × 1.5)

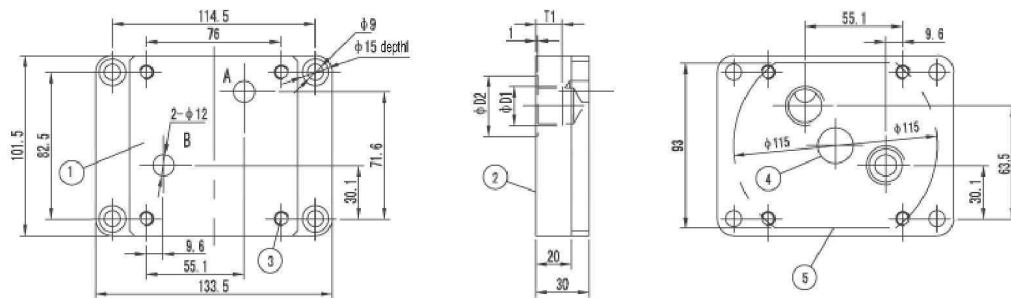
(Dimensions in mm)



Size	Type	Weight	D1	D2	T1	T2	Valve fixing screws	Tightening torque
NC25	G44/01	0.9kg	G1/4"	25	12	17	4-M5 × 50 -10.9 (GB/T70.1-2000)	6.1N.m
	G44/02		M14 × 1.5					
	G45/01		G1/2"	34	14	20		
	G45/02		M22 × 1.5					

G279/01(G1/2) G279/02(M22 × 1.5) G280/01 (G3/4) G280/02(M27 × 2)

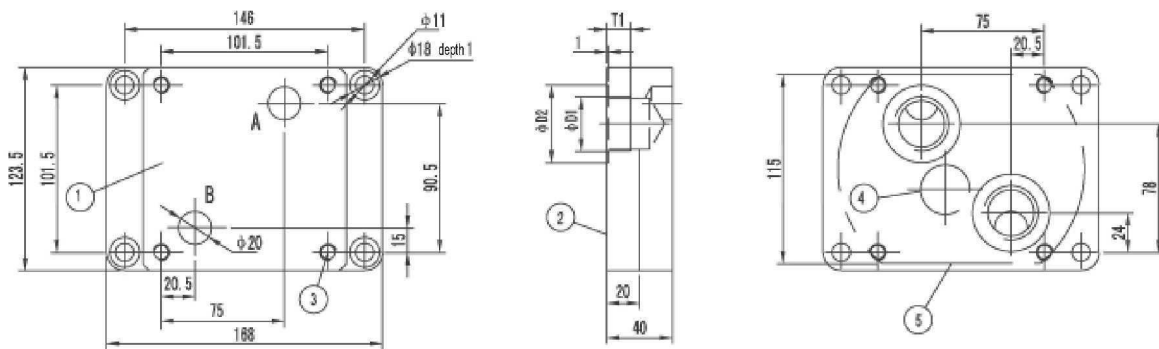
(Dimensions in mm)



Size	Type	Weight	D1	D2	T1	T2	Valve fixing screws	Tightening torque
NC10	G279/01	2.3kg	G1/2"	34	15	17	4-M8 × 50 -10.9 (GB/T70.1-2000)	
	G279/02		M22 × 1.5					
	G280/01		G3/4"	42	17	20		
	G280/02		M27 × 1.5					

G281/01(G1/2) G281/02(M23 × 2) G282/01(G1/4) G282/02(M42 × 1.5)

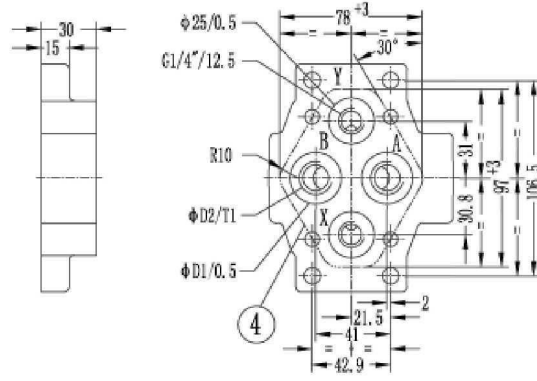
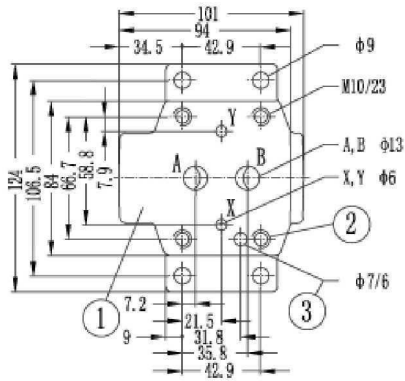
(Dimensions in mm)



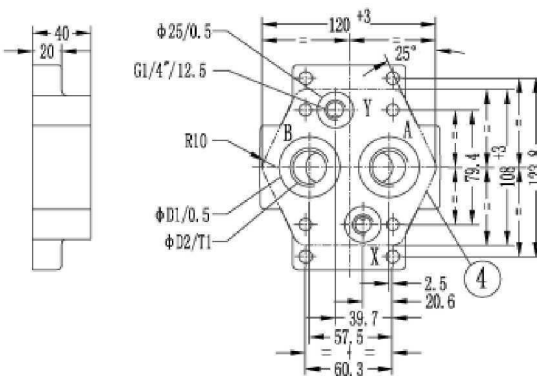
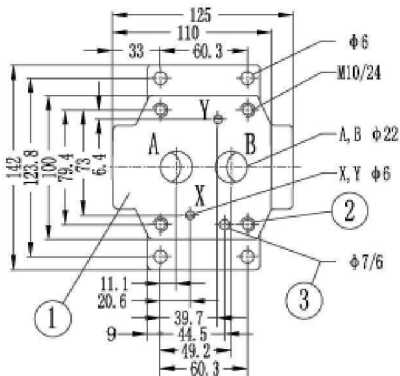
Size	Type	Weight	D1	D2	T1	T2	Valve fixing screws	Tightening torque
NC18	G281/01	4kg	G1"	47	19		4-M10 × 80 -10.9 (GB/T70.1-2000)	
	G281/02		M33 × 2					
	G282/01		G1 1/4"	56	21			
	G282/02		M42 × 1.5					

1, mating piece of valve 2, underside 3, Valve fixing screws 4, φ 20 for size 10 φ 30 for size 16 keep free from drillings used for orifice support 5, Valve panel cut-out

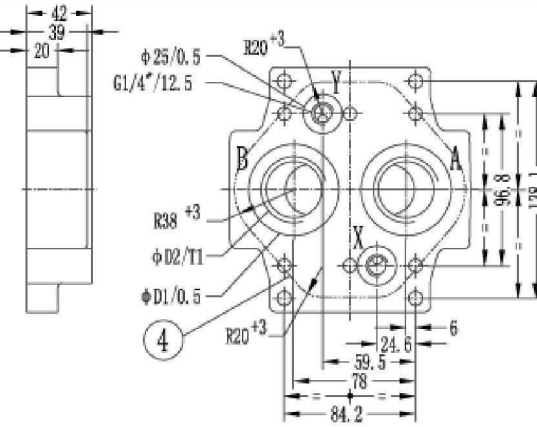
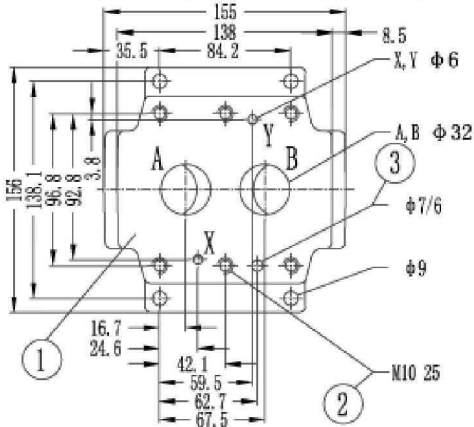
Scaleboard



Size	Type	D1	D2	T1	Valve fixing screws	Tightening torque for screws	Weight
NC10	G460/01	28	G3/8"	13	4 - M10 × 40 -10.9 (GB/T70.1-2000)	69Nm	1.7kg
	G460/02		M18 × 1.5				
	G461/01	34	G1/2"	16			
	G461/02		M22 × 1.5				



Size	Type	D1	D2	T1	Valve fixing screws	Tightening torque for screws	Weight
NC25	G412/01	42	G3/4"	17	4 - M10 × 50 -10.9 (GB/T70.1-2000)	69Nm	3.3kg
	G412/02		M27 × 2				
	G413/01	47	G1"	20			
	G413/02		M33 × 2				



Size	Type	D1	D2	T1	Valve fixing screws	Tightening torque for screws	Weight
NC32	G414/01	56	G1 1/4"	20.5	6 - M10 × 60 -10.9 (GB/T70.1-2000)	69Nm	5kg
	G414/02		M42 × 2				
	G415/01	61	G1 1/2"	22.5			
	G415/02		M48 × 2				

1 mating piece of valve 2 Valve fixing screws 3 locating pin 4 Front panel cut-out

Notice

1. The fluid must be filtered. Minimum filter fineness is 20 μm .
2. The tank must be sealing up and an air filter must be installed on air entrance.
3. Products without subplate when leaving factory, if need them, please ordering specially.
4. Valve fixing screws must be high intensity level (class 10.9). Please select and use them according to the parameter listed in the sample book.
5. Roughness of surface linked with the valve is required to $\frac{0.8}{\nabla}$.
6. Surface finish of mating piece is required to 0.01/100mm.