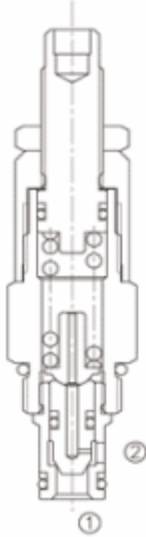


Ayarlanabilir, Direk Hareketli Kartriç Emniyet Valfi

LADRV2-08



Adjustable, Direct-Acting Cartridge Relief Valve

OPERATION

The valve prevents flow from ① to ② until the set crack pressure at ① is achieved. The poppet then unseats allowing flow from ① to ② protecting the circuit from over pressurization.

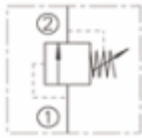
FEATURES

- Adjustments cannot be backed out of the valve.
- positive stops prevent springs from going solid.
- Optional spring ranges to 250 bar .
- Fast response to pressure changes
- Compact size.

ÖZELLİKLER

- Ayarlamalar valfin dışından yapılamaz
- Katrı hareketini yaylar ayarlanarak tam durdurma
- 250 bara kadar seçmeli yay aralığı
- Ani basınç yükselmelerinde sorunsuz tepki
- Endüstriyel standartlarda kavite
- Kompakt Boyut

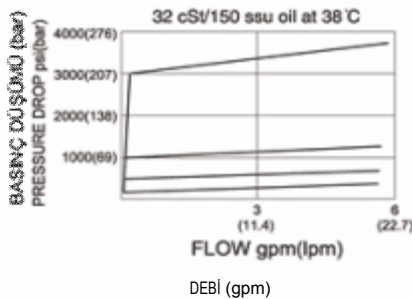
SYMBOL



SPECIFICATIONS

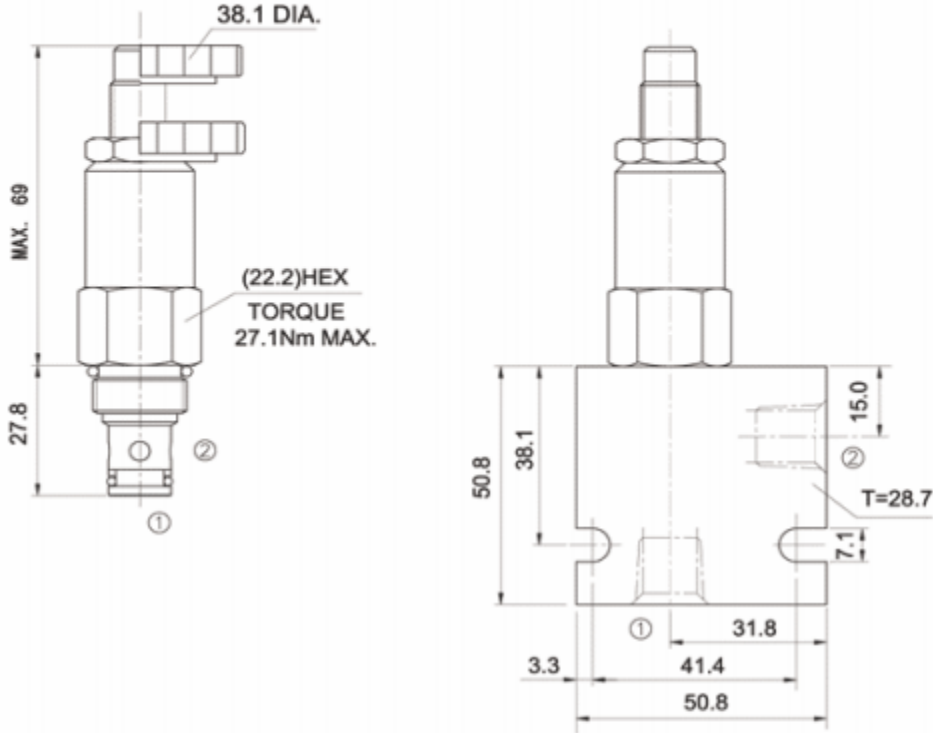
Operating Pressure : 250 bar
Flow : See PRESSURE DROP VS. FLOW graph.
Internal Leakage : 5 drops/min.MAX.to 80% of nominal setting
Spring Range :
4 to 35 Bar; PRESET : 17Bar
7 to 76 Bar; PRESET : 38Bar
17 to 159 Bar; PRESET : 79Bar
17 to 260 Bar; PRESET : 124Bar
Temperature : -40 to 120 °C with standard Buna seals
Filtration : ISO 19/15
Fluids : Mineral-based fluids.
For other fluid compatibility consult factory.
Cavity : 08-2; See page 264
Body Material : Anodized 6061T6 aluminum alloy rated at 207 Bar.

PRESSURE DROP VS. FLOW



YERLEŞTİRME ÖLÇÜLERİ

INSTALLATION DIMENSIONS



Unit=Millimeters

TO ORDER

