

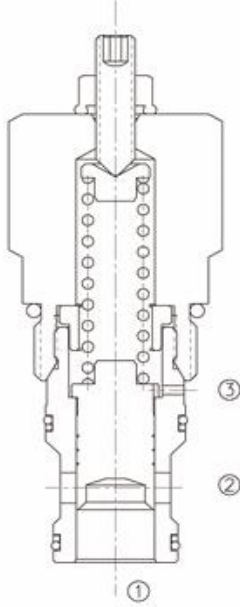
Ayarlanabilir, Lojik Element, Dıştan Pilot ile Akış ve Basınç Kontrolü

LEP-16-S3

Adjustable, Logic Element, Flow and Pressure Control With External Pilot

OPERATION

When pressure at ① rises above the selected spring bias pressure against the spool, the valve shifts to allow flow from ① to ②. Pilot pressure at ③ is additive to the spring bias pressure. The valve may be used in switching or compensation type applications.



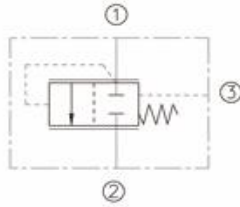
FEATURES

- Optional spring bias pressure.
- Hardened poppet and seat for long life.
- Compact size.
- Industry common cavity.

ÖZELLİKLER

İsteğe bağlı basınç yay gerilmesi Uzun ömür için sertleştirilmiş hassas poppet ve yuva Kompakt boyut Endüstriyel standartlarda kavim

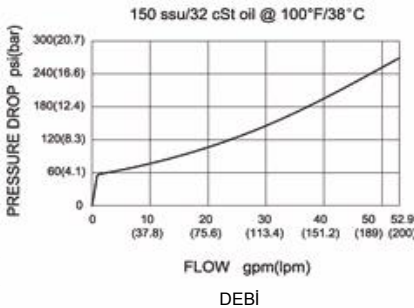
SYMBOL



SPECIFICATIONS

MAX. Operating Pressure : 350 Bar
Flow : See PRESSURE DROP VS.FLOW graph
Internal Leakage : 200ml/min. at max.200 Bar
Temperature : -30 ° F to +250 ° F(-35°C to +120°C)
Fluids : Mineral-based fluids.
For other fluid compatibility, consult factory.
Cavity : 16-S3,see page 267
Body Material : steel rated at 350 Bar.

PRESSURE DROP VS. FLOW



BASINÇDÜMÜ (bar)

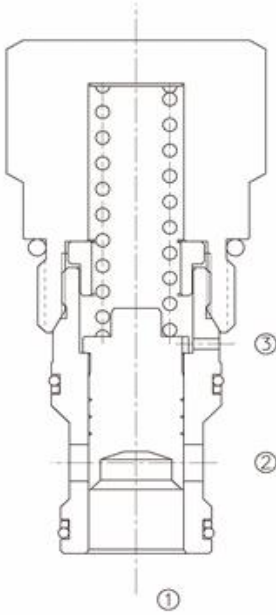
Hidrosam Hidropar Hidrolik Pnömatik Elektrik San.Tic. Ltd

Alaaddinbey mah. 623 sok. Sam 1 plaza B blok No:2/d Nilüfer/BURSA TURKEY

Tel:+90224 441 8877 Fax:+90224 441 0333 info@hidrosam.com www.hidrosam.com

Ayarlanamayan, Lojik Element, Dıştan Pilot ile Akış ve Kontrol

LEP-16-S3-T



Non-Adjustable, Logic Element, Flow and Pressure Control With External Pilot

OPERATION

When pressure at ① rises above the selected spring bias pressure against the spool, the valve shifts to allow flow from ① to ②. Pilot pressure at ③ is additive to the spring bias pressure. The valve may be used in switching or compensation type applications.

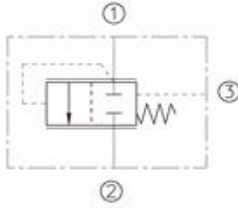
FEATURES

- Optional spring bias pressure.
- Hardened poppet and seat for long life.
- Compact size.
- Industry common cavity.

ÖZELLİKLER

İsteğe bağlı basınç yay gerilmesi
Uzun ömür için sertleştirilmiş
hassas poppet ve yuva
Kompakt boyut
Endüstriyel standartlarda kavite

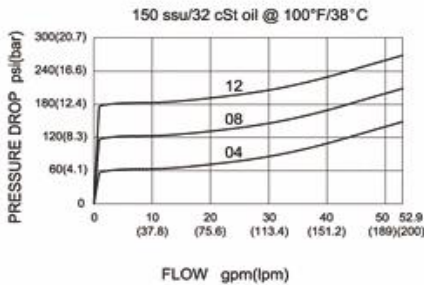
SYMBOL



SPECIFICATIONS

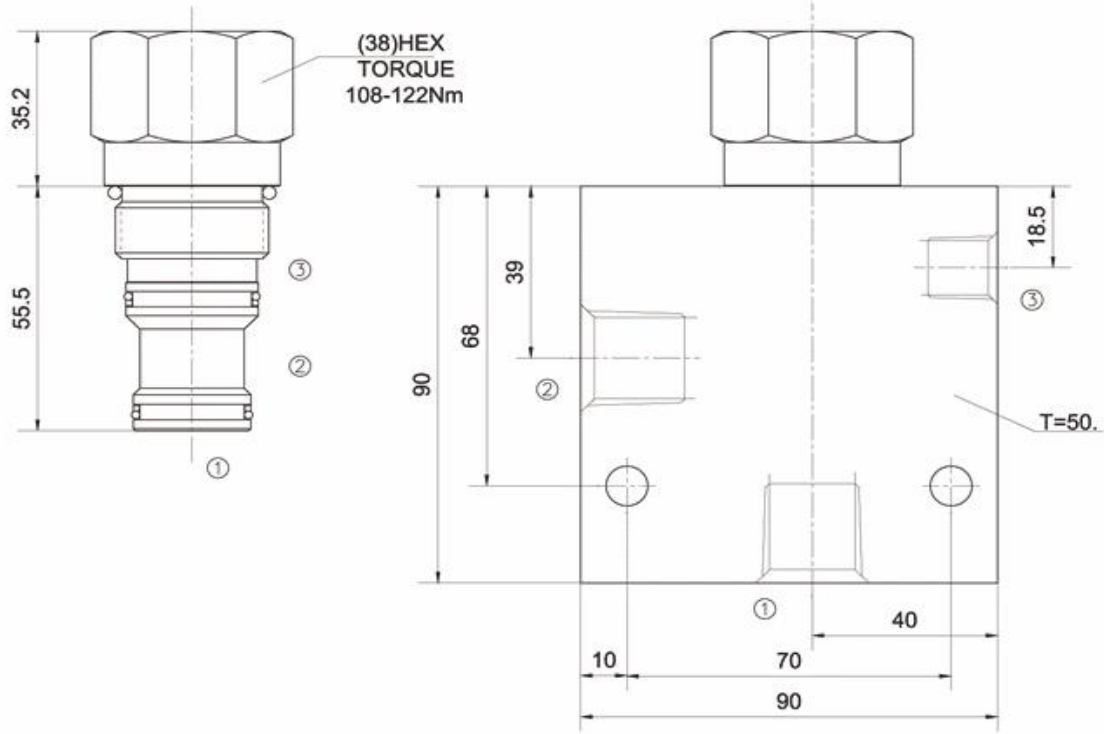
Max. operating Pressure : 350 Bar
Flow : See PRESSURE DROP VS.FLOW graph.
Internal Leakage : 200ml/min. at max.200 Bar
Temperature : -30 ° F to +250 ° F(-35°C to +120°C)
Fluids : Mineral-based fluids.
For other fluid compatibility, consult factory.
Cavity : 16-S3,see page 267
Body Material : Steel rated at 350 Bar.

PRESSURE DROP VS. FLOW



DEBİ

YERLEŞTİRME ÖLÇÜLERİ INSTALLATION DIMENSIONS



Unit=Millimeters

TO ORDER

