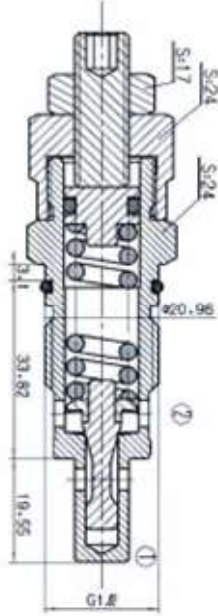


Ayarlanabilir, Direkt- Hareketli Kartriç Emniyet Valfi

LNRV-08G-25

Adjustable, Direct-acting Cartridge Relief Valve



OPERATION

Flow is blocked from ① to ② until pressure increases to meet the selected valve setting, lifting the poppet from its seat and allowing relief flow through ② to tank. Pressure at ② is additive to the relief setting of the valve. The unique Oil Control poppet design provides enhanced stability at all flows and pressures.

FEATURES

- Hardened poppet and cage for long life.
- Optional spring ranges to 350 bar.
- Smooth response to pressure surges.
- Industry common cavity.
- Compact size.

ÖZELLİKLER

- Uzun ömür için sertleştirilmiş hassas popet ve kafes
- Basınç dalgalanmalarına karşı uygun tepki
- Kesintisiz düz harekette iken ayarlanabilir yay engellemeleri ile düzenlemeler yapılır
- Kompakt boyut

SPECIFICATIONS

Operating Pressure : 350 Bar

Flow : See PRESSURE DROP VS. FLOW graph.

Internal Leakage : 5 drops/min max. to 85% of nominal setting

Standard Spring Range :

- 5 to 50 bar ; preset 30 bar ;
- 30 to 100 bar ; preset 70 bar ;
- 50 to 210 bar ; preset 160 bar ;
- 100 to 350 bar ; preset 250 bar ;

Temperature : -30° F to +250° F (-35°C to +120° C)

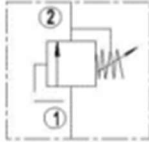
Fluids : Mineral based fluids.

For other fluid compatibility consult factory.

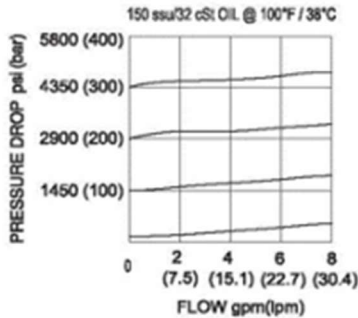
Cavity : 1/2 see page 227

Body Material : Anodized 6061T6 aluminum alloy rated at 207 Bar

SYMBOL



PRESSURE DROP VS. FLOW



Order NO.	Bar	(Bar)		Bar/Turn
LNRV-08G-25-7	5-50	30	LNRV08M-2-6d	12
LNRV-08G-25-14	30-100	70	LNRV08M-2-6c	24
LNRV-08G-25-30	50-210	160	LNRV08M-2-6b	47
LNRV-08G-25-50	100-350	250	LNRV08M-2-6a	82

Hidrosam Hidropar Hidrolik Pnömatik Elektrik San.Tic. Ltd
Alaaddinbey mah. 623 sok. Şam 1 plaza B blok No:2/d Nilüfer/BURSA TURKEY

Tel:+90224 441 8877 Fax:+90224 441 0333

info@hidrosam.com www.hidrosam.com