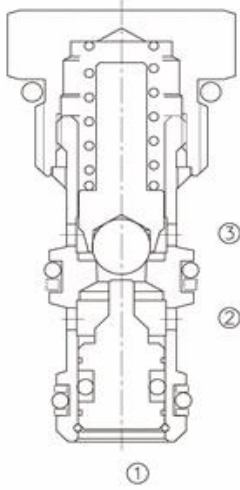


Direkt-Hareketli, Bilyalı-Tip Kartriç Çekvalf

LPC-08

Pilot To Open, Ball-Type Cartridge Check Valve



OPERATION

The valve allows flow from ② to ③, while normally blocking flow from ③ to ②. Flow will be allowed from ③ to ② when sufficient pressure is applied at ①.

The cartridge has a 3:1 pilot ratio, meaning that at least one-third of the load pressure held at ③ is required at ① to open the valve.

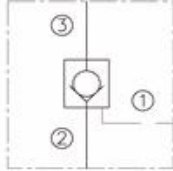
FEATURES

- Hardened poppet and seat for long life.
- Low leakage.
- Compact size.
- Industry common cavity.

ÖZELLİKLER

- Uzun ömür için sertleştirilmiş hassas popet ve yuva
- Düşük sızıntı
- Endüstriyel standartlarda kavite
- Kompakt boyut

SYMBOL



SPECIFICATIONS

Operating Pressure: 250 Bar

Flow : See PRESSURE DROP VS.FLOW graph.

Internal Leakage : at 207 Bar;

③ to ②: 3 drops/min.(0.15 ml/min.)

② to ① with sealed piston: zero leakage

Crack Pressures 1.7=1.7 Bar

4.8=4.8 Bar

6.2=6.2 Bar

8.2=8.2 Bar

18.3=18.3 Bar

Pilot Ratio : 3 :1

Temperature : -30°F to +250°F(-35°C to +120°C)

Recommended Filtration : Critical Application - ISO 16/12

: Non-Critical Application - ISO 19/15

Fluids : Mineral-based fluids.

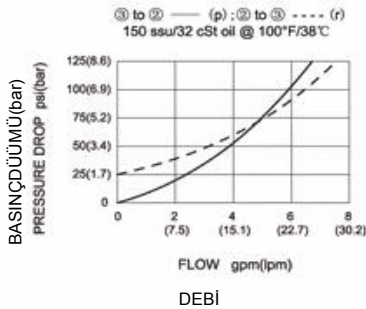
For other fluid compatibility, consult factory.

Cavity : 08-3, see page 264

Body Material : Anodized 6061T6 aluminum

Alloy rated at 207 Bar

PRESSURE DROP VS. FLOW

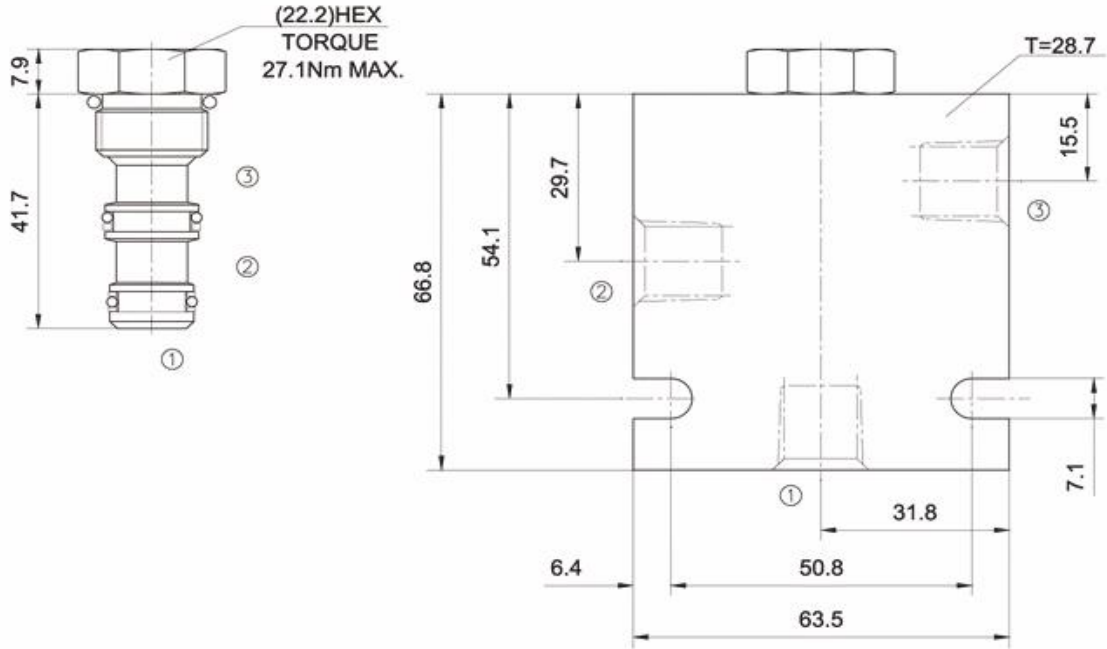


Hidrosam Hidropar Hidrolik Pnömatik Elektrik San.Tic. Ltd
Alaaddinbey mah. 623 sok. Şam 1 plaza B blok No:2/d Nilüfer/BURSA TURKEY

Tel:+90224 441 8877 Fax:+90224 441 0333

info@hidrosam.com www.hidrosam.com

YERLEŞTİRME ÖLÇÜLERİ INSTALLATION DIMENSIONS



Unit=Millimeters

TO ORDER

