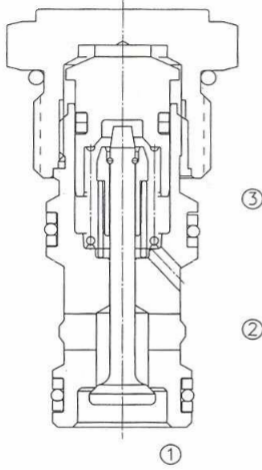


## Pilotla Kapalı, Poppet- Tip Kartriç Çekvalf

### LPOC1-10-3S



Pilot To Open, Poppet-Type  
Cartridge Check Valve

#### OPERATION

This valve allows free flow from port ② to port ① and blocks flow from port ① to port ② or holding a load. Flow will be allowed from port ① to port ② when pressure is applied to pilot ③

This pilot operated check valve has a 3 to 1 pilot ratio, meaning that it takes at least one-third of the load pressure held at port ① that is required at pilot ③ to open the valve.

#### FEATURES

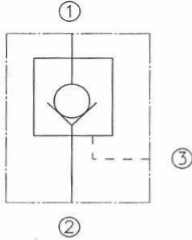
- Hardened poppet and seat for long life.
- Industry common cavity.
- Compact size.
- High operating pressure.

#### ÖZELLİKLER

- Uzun ömür için sertleştirilmiş hassas poppet ve yuva
- Düşük sızıntı
- Kompakt boyut
- Yüksek çalışma basıncı

SYMBOL

#### SPECIFICATIONS



**Operating Pressure** : 350 Bar

**Flow** : See PRESSURE DROP VS. FLOW graph.

**Internal Leakage** : 2 drops/min. max. at 350 Bar

Crack Pressures : 0.3=0.3bar

2.0=2.0Bar

5.1=5.1Bar

6.9=6.9Bar

**Pilot Ratio** : 3 : 1

**Temperature** : -30°F to +250°F (-35°C to +120°C)

**Recommended Filtration**: Critical Application-ISO 16/12

Non-Critical Application-ISO 19/15

**Fluids** : Mineral-based fluids.

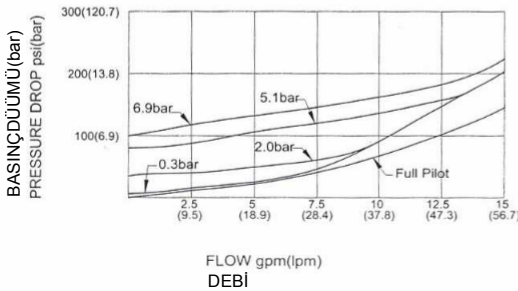
For other fluid compatibility, consult factory.

**Cavity** : 10-3, see page 265

**Body Material** : Anodized 6061T6 aluminum  
alloy rated at 207 Bar.  
steel rated at 350Bar.

#### PRESSURE DROP VS. FLOW

150 ssu/32 cSt OIL@100°F/38°C



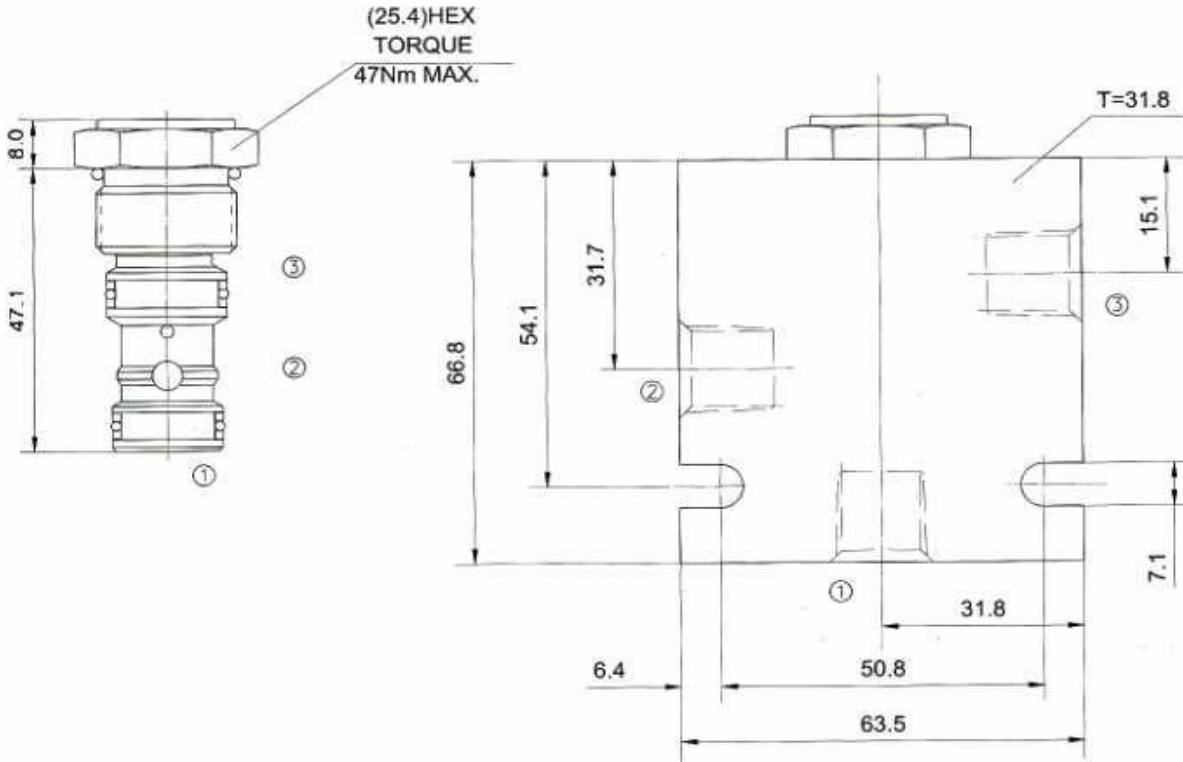
**Hidrosam Hidropar Hidrolik Pnömatik Elektrik San.Tic. Ltd**

Alaaddinbey mah. 623 sok. Şam 1 plaza B blok No:2/d Nilüfer/BURSA TURKEY

Tel:+90224 441 8877 Fax:+90224 441 0333

[info@hidrosam.com](mailto:info@hidrosam.com) [www.hidrosam.com](http://www.hidrosam.com)

## YERLEŞTİRME ÖLÇÜLERİ INSTALLATION DIMENSIONS



Unit=Millimeters

### TO ORDER

