

LPOSRV2-10

DESCRIPTION

A cartridge-style pilot-operated poppet -type relief valve with reverse free flow check

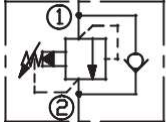
OPERATION

The valve prevents flow from ① to ② until pressure at ① exceeds the set crack pressure and opens the pilot section. The pilot flow creates a pressure differential across the poppet which causes the valve to open allowing flow from

① to ② protecting the circuit from over pressurization.

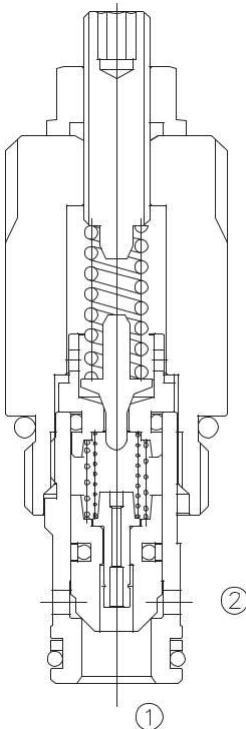
Pressure at ② overcomes the spring-bias pressure 2 ~ 3bar and allows free flow from ② to ①, then in its steady state, pressure maintains at 1.4 bar.

SYMBOL



SPECIFICATIONS

(Max.Operating Pressure):	350bar
(Flow):	100 L/min.
(Internal Leakage):	10 drops/min. max. to 80% of nominal setting
(Temperature):	-40°F to +250°F(-40°C to +120°C)
(Filtration):	See page (参见) N-1
(Fluids):	Mineral-based fluids with viscosities of 7.4 to 420 cSt.
(Cavity):	10-2, See page M-2
(Body Material):	Steel & Ductile iron rated to 350bar 350bar



TO ORDER

LPOSRV2-10-* */****-* *



1

LPOSRV2=
Adjustable Pilot-Operated Cartridge
Relief Valve

2

Size
10=10

3

Spring Ranges

20=500-2000psi(35-140bar)
Preset:695psi(48bar)
40=1000-4000psi(70-280bar)
Preset:1275psi(88bar)
60=2000-6000psi(140-420bar)
Preset:2030psi(140bar)

4

Setting In Bar

Blank= Preset
Example:0250=250Bar

5

Body Porting

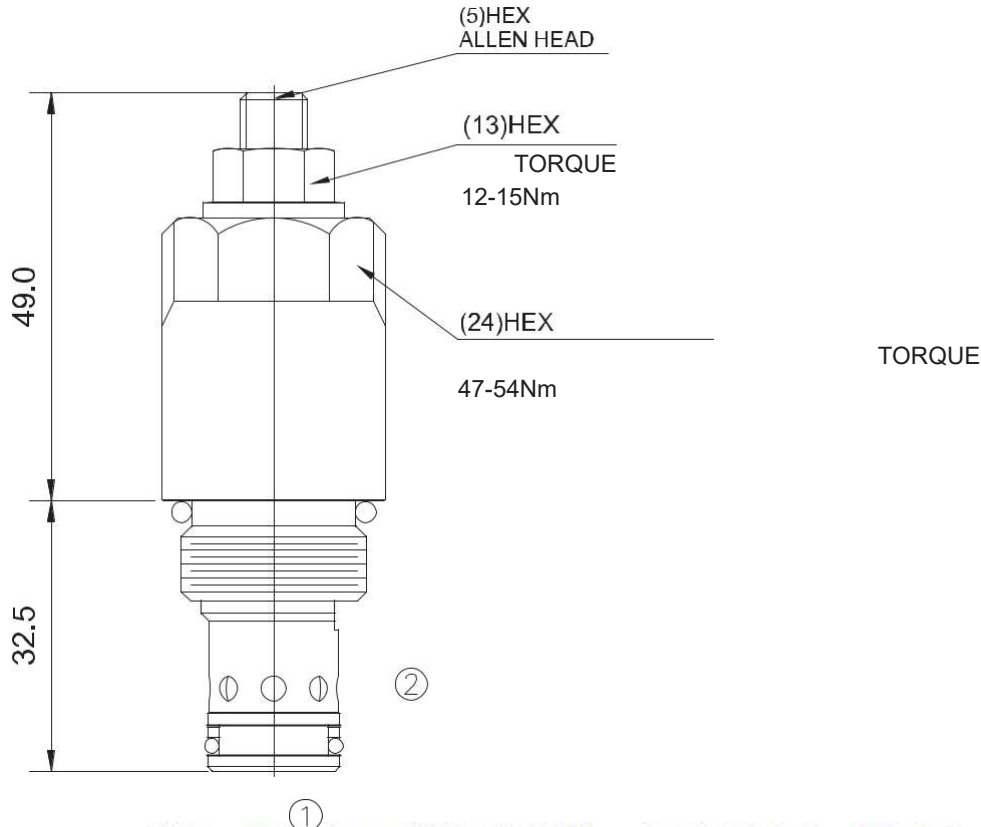
Blank= None
6T=SAE 6
8T=SAE 8
3G=G 3/8
4G=G 1/2

K-4

Other Porting is Available

INSTALLATION DIMENSIONS

Unit=Millimeters



Hidrosam Hidropar Hidrolik Pnömatik Elektrik San.Tic. Ltd
Alaaddinbey mah. 623 sok. Şam 1 plaza B blok No:2/d Nilüfer/BURSA TURKEY

Tel:+90224 441 8877 Fax:+90224 441 0333

info@hidrosam.com www.hidrosam.com