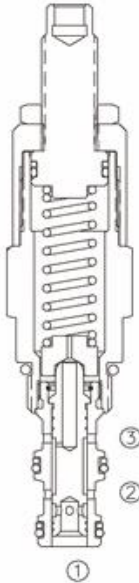


Direk Hareketli, Basınç Kısma / Boşaltma Valfi

LPS-08



Adjustable, Internal Pilot & Drain Sequence Valve

OPERATION

In its steady state, the valve blocks flow at ①, while allowing flow to pass from ② to ③. On attainment of a pre-determined pressure at ①, the cartridge shifts to open ① to ②.

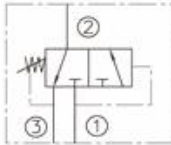
FEATURES

- Adjustments prohibit springs from going solid.
- Optional spring ranges to 165.5 bar.
- Hardened spool and cage for long life.
- Industry common cavity.

ÖZELLİKLER

- Katı hareketi yaylar ayarlanarak önlenir
- 165,5 bara kadar seçmeli yay aralığı
- Uzun ömür için sertleştirilmiş hassas parça
- Kompakt Boyut

SYMBOL



SPECIFICATIONS

Operating Pressure : 240 bar

Flow : See PRESSURE DROP VS. FLOW graph.

Internal Leakage ① to ② :

82 cc/minute max. to 85% of nominal setting.

Standard Spring Ranges :

3.4 to 20.7bar; 6.9 to 41.4bar; 10.3 to 89.7bar; 31.0 to 165.5 bar;

Temperature : -30°F to +250°F (-35°C to +120°C)

Recommended Filtration :

Critical Application – ISO 16/12

Non-Critical Application – ISO 19/15

Fluids : Mineral-based fluids.

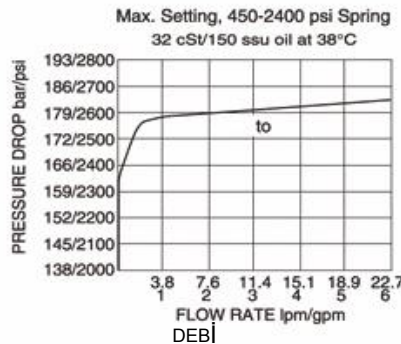
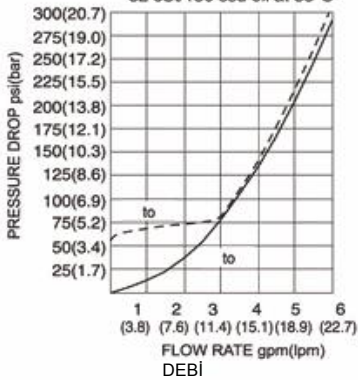
For other fluid compatibility, consult factory.

Cavity : 08-3 ; See page 264

Body Material : Anodized 6061T6 aluminum alloy rated at 207 Bar.

PRESSURE DROP VS. FLOW

— Max. Setting, 450-2400 psi Spring
- - - Min. Setting, 50-300 psi Spring
32 cSt/150 ssu oil at 38°C



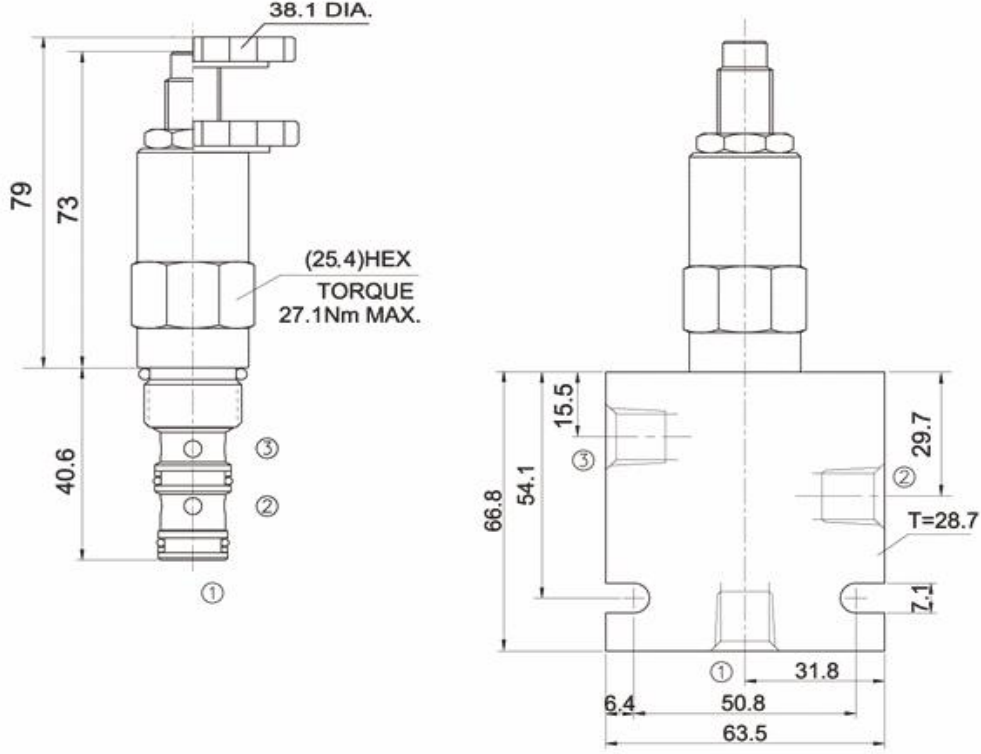
Hidrosam Hidropar Hidrolik Pnömatik Elektrik San.Tic. Ltd
Alaaddinbey mah. 623 sok. Şam 1 plaza B blok No:2/d Nilüfer/BURSA TURKEY

Tel:+90224 441 8877 Fax:+90224 441 0333

info@hidrosam.com www.hidrosam.com

YERLEŞTİRME ÖLÇÜLERİ

INSTALLATION DIMENSIONS



Unit=Millimeters

TO ORDER

LPS - 08 - * * - * / * * * * - * *

Adjustable, Internal Pilot
& Drain Sequence VALVE

CAVITY

Spring Range

3= 50 to 300 psi (3.4 to 20.7 bar);
6=100 to 600 psi (6.9 to 41.4 bar);
13=150 to 1300 psi (10.3 to 89.7 bar);
24=450 to 2400 psi (31.0 to 165.5 bar);

BODY PORTING

3N=3/8PTF
4T=SAE4
6T=SAE6
Other Porting is Available
(Omit for Cartridge only)

SETTING IN BAR

EXAMPLE: 0120=120BAR

K 1-1/2' Dia. Knob

(Omit for 1/4' Hex Allen head)

Hidrosam Hidropar Hidrolik Pnömatik Elektrik San.Tic. Ltd
Alaaddinbey mah. 623 sok. Şam 1 plaza B blok No:2/d Nilüfer/BURSA TURKEY

Tel:+90224 441 8877 Fax:+90224 441 0333

info@hidrosam.com www.hidrosam.com