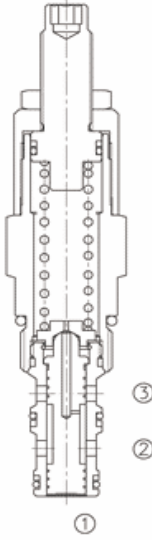


## Ayarlanabilir, Dıştan Pilot & İçten Boşaltmalı Sıralı Valf

### LPS2-10



### Adjustable, External Pilot & Internal Drain Sequence Valve

#### OPERATION

In its steady state, the valve blocks flow from ③ to ②.

On attainment of a pre-determined pressure at ①, the cartridge shifts to open ③ to ②.

Since the spring chamber is vented at ②, back pressure at ② will directly (1:1) affect the valve's setting.

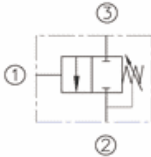
#### FEATURES

- Adjustments prohibit springs from going solid.
- Optional spring ranges to 160 bar .
- Hardened spool and cage for long life.
- Industry common cavity.

#### ÖZELLİKLER

- Kesintisiz düz harekette iken ayarlanabilir yay engellemeleri ile düzenlemeler yapılır
- 160 bara kadar seçmeli yay aralığı
- Uzun ömür için sertleştirilmiş hassas sürgü ve kafes
- Kompakt Boyut

#### SYMBOL



#### SPECIFICATIONS

Operating Pressure : 207 bar

Flow : See PRESSURE DROP VS. FLOW graph.

Internal Leakage :

82 cc/minute max. to 90% of nominal setting.

Standard Spring Ranges :

5-26Bar;

14-56Bar;

21-104Bar;

28-145Bae;

Temperature : -30°F to +250°F (-35°C to +120°C)

Recommended Filtration :

Critical Application – ISO 16/12

Non-Critical Application – ISO 19/15

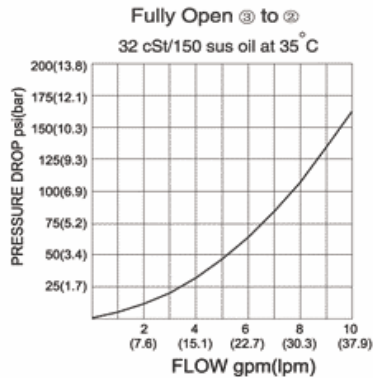
Fluids : Mineral-based fluids.

For other fluid compatibility, consult factory.

Cavity : 10-3 ; See page 265

Body Material : Anodized 6061T6 aluminum alloy rated at 207 Bar.

#### PRESSURE DROP VS. FLOW

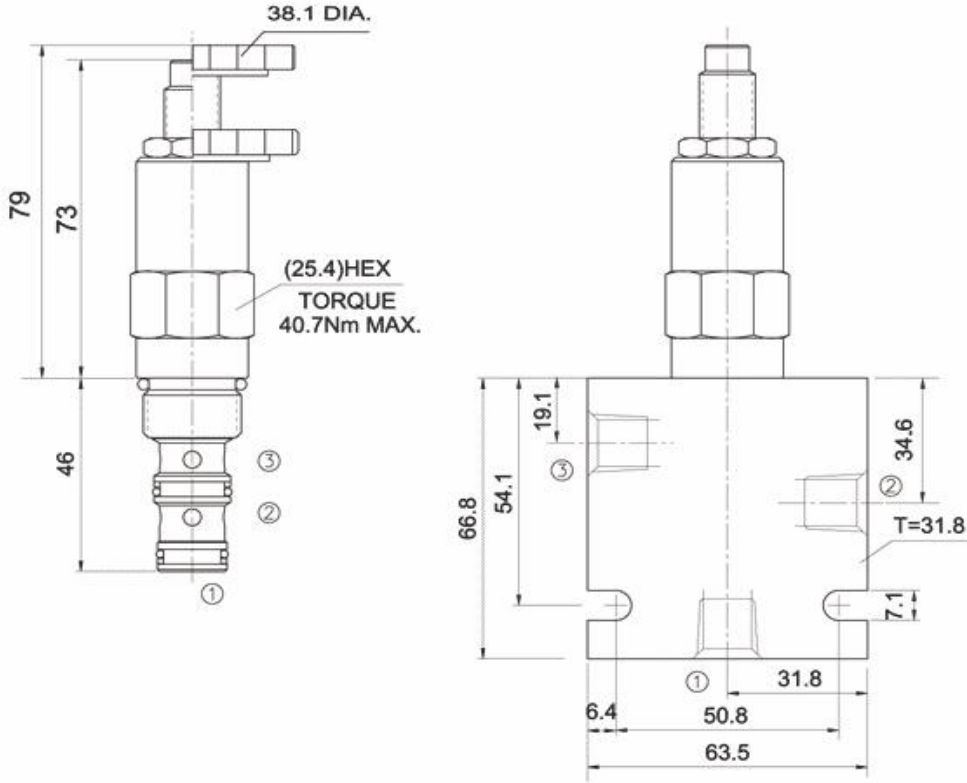


Hidrosam Hidropar Hidrolik Pnömatik Elektrik San.Tic. Ltd  
Alaaddinbey mah. 623 sok. Şam 1 plaza B blok No:2/d Nilüfer/BURSA TURKEY

Tel:+90224 441 8877 Fax:+90224 441 0333

[info@hidrosam.com](mailto:info@hidrosam.com) [www.hidrosam.com](http://www.hidrosam.com)

## YERLEŞTİRME ÖLÇÜLERİ INSTALLATION DIMENSIONS



Unit=Millimeters

## TO ORDER

LPS2 - 10 - \* \* - \* /\*\*\*\*\* - \* \*

ADJUSTABLE, EXTERNAL PILOT  
& INTERNAL DRAIN SEQUENCE  
VALVE

CAVITY

Spring Range

4=80-400PSI(5.5-27.6BAR) PRESET:200PSI(13.8BAR)  
8=200-800PSI(13.8-55.2BAR) PRESET:400PSI(27.6BAR)  
15=300-1500PSI(20.7-103BAR) PRESET:750PSI(51.5BAR)  
21=400-2100PSI(28-145BAR) PRESET:1050PSI(72.5BAR)

BODY PORTING  
3N=3/8PTF  
6T=SAE6  
8T=SAE8  
Other Porting is Available  
(Omit for Cartridge only)

SETTING IN BAR  
EXAMPLE: 0120=120BAR  
(Omit for standard)

K 1-1/2' Dia. Knob  
(Omit for 1/4' Hex Allen head)

**Hidrosam Hidropar Hidrolik Pnömatik Elektrik San.Tic. Ltd**  
Alaaddinbey mah. 623 sok. Şam 1 plaza B blok No:2/d Nilüfer/BURSA TURKEY  
Tel:+90224 441 8877 Fax:+90224 441 0333

[info@hidrosam.com](mailto:info@hidrosam.com) [www.hidrosam.com](http://www.hidrosam.com)