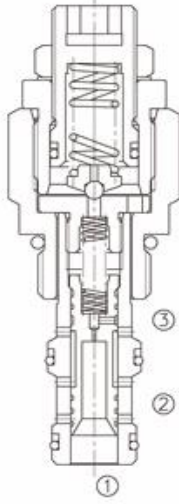


Pilot Uyarılı , Kayan Sürgülü Basınç Sıralı Valf

LPSCS-08



Pilot Operated, Sliding Spool Pressure Sequence Valve

OPERATION

This valve is a normally closed sequence valve, blocking flow from port ① to port ②. When pressure in port ① exceeds bias spring setting the spool will shift allowing flow from port ① to port ② and blocking flow from port ② to port ③.

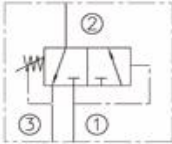
FEATURES

- Adjustments prohibit springs from going solid.
- Optional spring ranges to 345 bar.
- Hardened seat for long life.
- Industry common cavity.

ÖZELLİKLER

- Kesintisiz düz harekette iken ayarlanabilir yay engellemeleri ile düzenlemeler yapılır
- 345 bara kadar seçmeli yay aralığı
- Uzun ömür için sertleştirilmiş hassas yuva
- Endüstriyel standartlarda kavite

SYMBOL



SPECIFICATIONS

Operating Pressure : 345 Bar

Flow : See PRESSURE DROP VS.FLOW graph.

Internal Leakage : 82 cc/minute max. to 85% of nominal setting.

Standard Spring Ranges : 3.5 to 104 Bar ; 3.5 to 207 Bar ; 3.5 to 345 Bar

Temperature : -40 °C to +120 °C

Recommended Filtration : Critical Application - ISO 16/12

Non-Critical Application - ISO 19/15

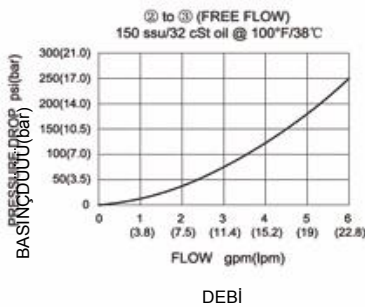
Fluids : Mineral-based fluids.

For other fluid compatibility, consult factory.

Cavity : 08-3, see page 264

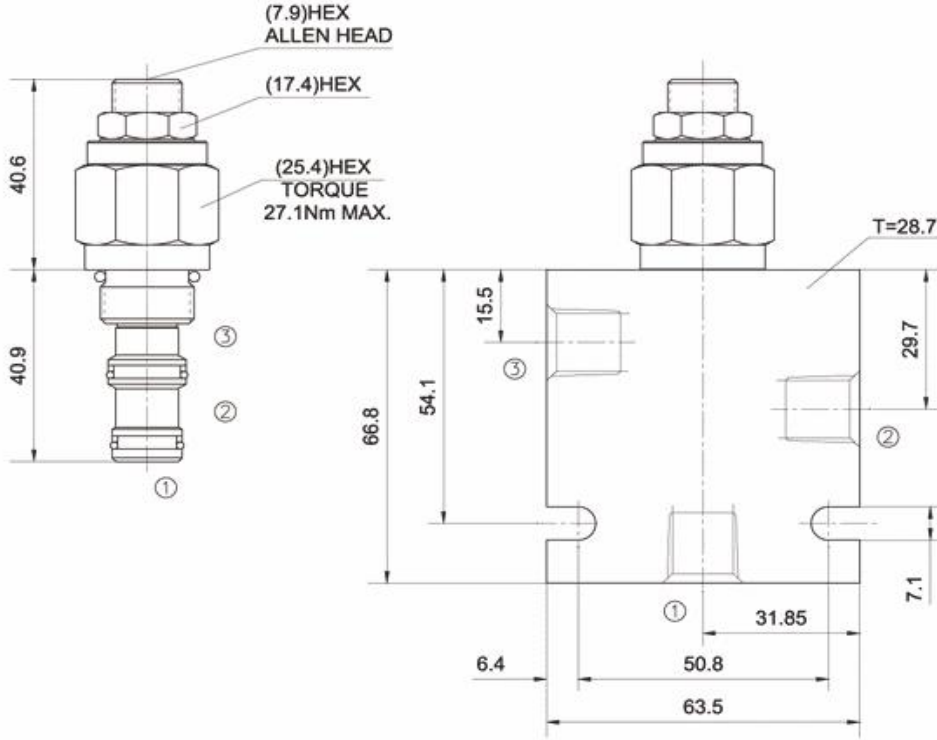
Body Material : steel rated at 350 Bar.

PRESSURE DROP VS. FLOW



YERLEŞTİRME ÖLÇÜLERİ

INSTALLATION DIMENSIONS



Unit=Millimeters

TO ORDER

