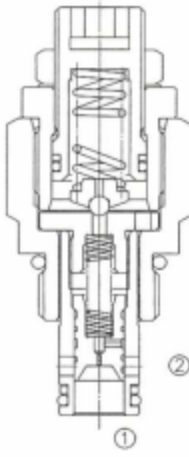


Ayarlanabilir, Kartriç Emniyet Valfi Pilot Uyarılı , Kayar Sürgü

LPSRV2-08



Adjustable, Cartridge Relief Valve, Pilot
Operated, Sliding Spool

OPERATION

The valve prevents flow from ① to ② until pressure at ① exceeds the set crack pressure and opens the pilot section. The pilot flow creates a pressure differential across the spool which causes the valve to open allowing flow from ① or ② protecting the circuit from over pressurization. This cartridge relief valve offers a smooth transition in response to a load change in a hydraulic circuit.

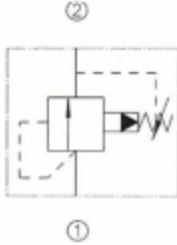
FEATURES

- Rapid response to pressure surges.
- Hardened parts for long life.
- Adjustment may be locked in place.
- Industry common cavity.
- Compact size.

ÖZELLİKLER

- Basınç yükselmesinde hızlı tepki
- Uzun ömür için sertleştirilmiş parça
- Kilitlenebilir ayar noktası
- Endüstriyel standartlarda kavite
- Kompakt Boyut

SYMBOL



SPECIFICATIONS

Max. Operating Pressure : 350 Bar

Flow : See PRESSURE DROP VS. FLOW graph.

Internal Leakage : 82cc/min.MAX.to 90% of nominal setting pressure.

Spring Ranges :

50psi(3.45bar)to 1500psi (103.5bar); Preset :450psi(31Bar)

50psi(3.45bar) to 3000psi (207bar); Preset : 950psi(65.5Bar)

50psi(3.45bar) to 5000psi (350bar); Preset : 1500psi(103Bar)

Temperature : -30°F to +250°F (-35°C to +120°C)

Recommended Filtration : ISO 19/15

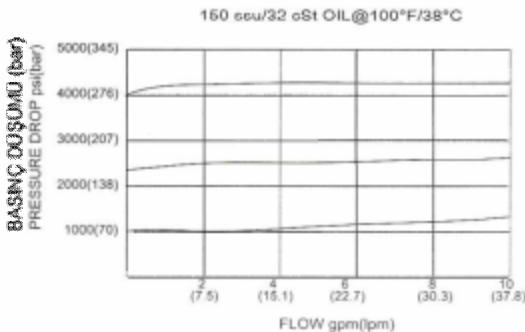
Fluids : Mineral-based fluids.

For other fluid compatibility consult factory.

Cavity : 08-2, see page 264

Body Material : Anodized 6061T6 aluminum alloy rated at 207 Bar.
Steel rated at 350Bar.

PRESSURE DROP VS. FLOW



DEBI (gpm)

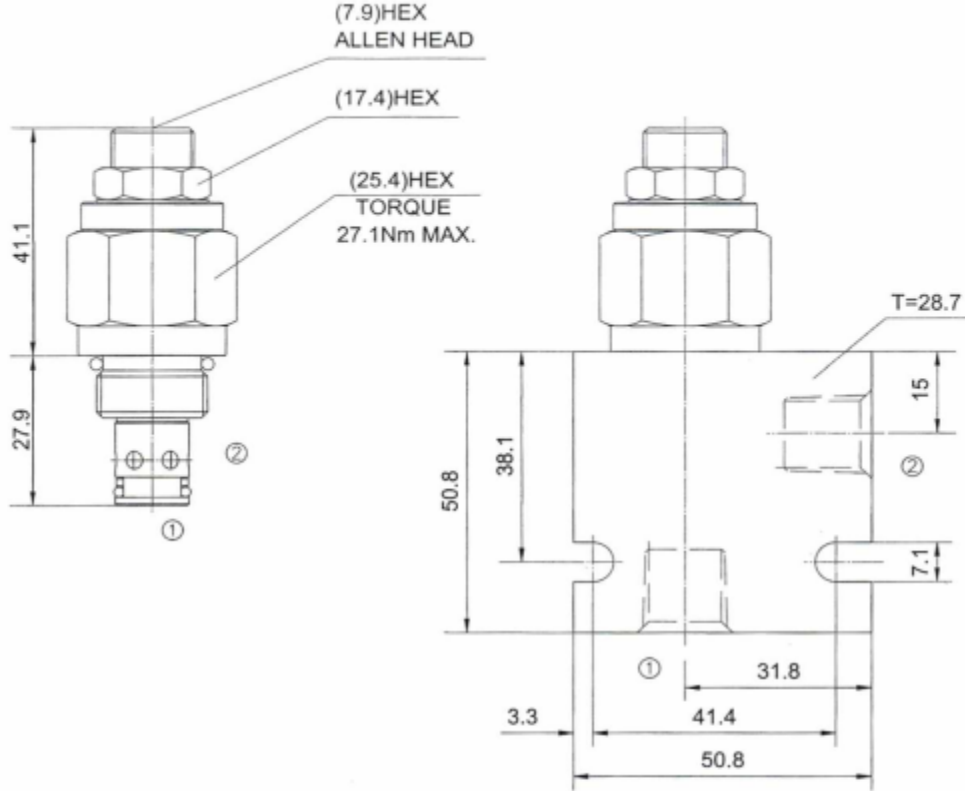
Hidrosam Hidropar Hidrolik Pnömatik Elektrik San.Tic. Ltd
Alaaddinbey mah. 623 sok. Şam 1 plaza B blok No:2/d Nilüfer/BURSA TURKEY

Tel:+90224 441 8877 Fax:+90224 441 0333

info@hidrosam.com www.hidrosam.com

YERLEŞTİRME ÖLÇÜLERİ

INSTALLATION DIMENSIONS



Unit=Millimeters

TO ORDER

