

Pilot Uyarılı, Dengeli Piston Kartriç Emniyet Valfi

LRPEE

Pilot-Operated, balanced
piston relief valve

OPERATION

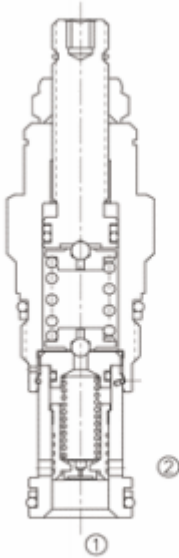
The valve are normally closed, pressure-limiting valves used to protect hydraulics components from pressure transients. Fast opening and closing is gained at the expense of smoothness. When the pressure at the inlet (port ①) reaches the valve setting, the valve starts to open to tank (port ②), throttling flow to limit the pressure rise. These valves have low pressure rise vs. flow and are very fast.

FEATURES

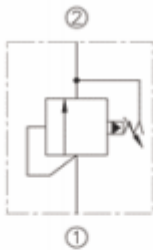
- Fast response to pressure surges.
- Suitable for use in cross port relief circuits. If used in cross port relief circuits consider spool leakage.
- Not suitable for use in load holding applications due to spool leakage.
- Back pressure on the tank port (port 2) is directly additive to the valve setting at a 1:1 ratio .
- Hardened poppet and seat for long life.
- Compact size.

ÖZELLİKLER

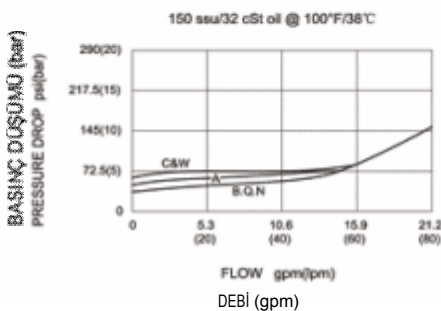
- Basınç yükselmesinde hızlı tepki
- Karşı devre tahliyelerindeki uygunluk. Eğer karşı devrede legaj göz önüne alınırsa
- Bobindeki legaj eksikliğinden dolayı yük binmelerindeki karşılmalarda kullanılmak için uygun değildir.
- 2 nolu tank hattındaki geri basıncı doğrudan valfe yerleştirilen 1:1 oranlı ilavedir.
- Uzun ömür için sertleştirilmiş yu ve popet
- Kompakt Boyut



SYMBOL



PRESSURE DROP VS. FLOW



SPECIFICATIONS

Max. Operating Pressure : 350 Bar

Flow : See PRESSURE DROP VS.FLOW graph.

Internal Leakage : 30 cc/min. at 70 Bar.

Response Time - Typical : 2 ms

Standard Spring Ranges :

A	7 to 210 Bar ,	Preset=70 Bar
B	3.5 to 105 Bar ,	Preset=70 Bar
C	10.5 to 420 Bar ,	Preset=70 Bar
D	1.7 to 55 Bar ,	Preset=30 Bar
E	1.7 to 28 Bar ,	Preset=14 Bar
W	10.5 to 315 Bar ,	Preset=70 Bar

Temperature : -30 ° F to +250 ° F (-35°C to +120°C)

Fluids : Mineral-based fluids.

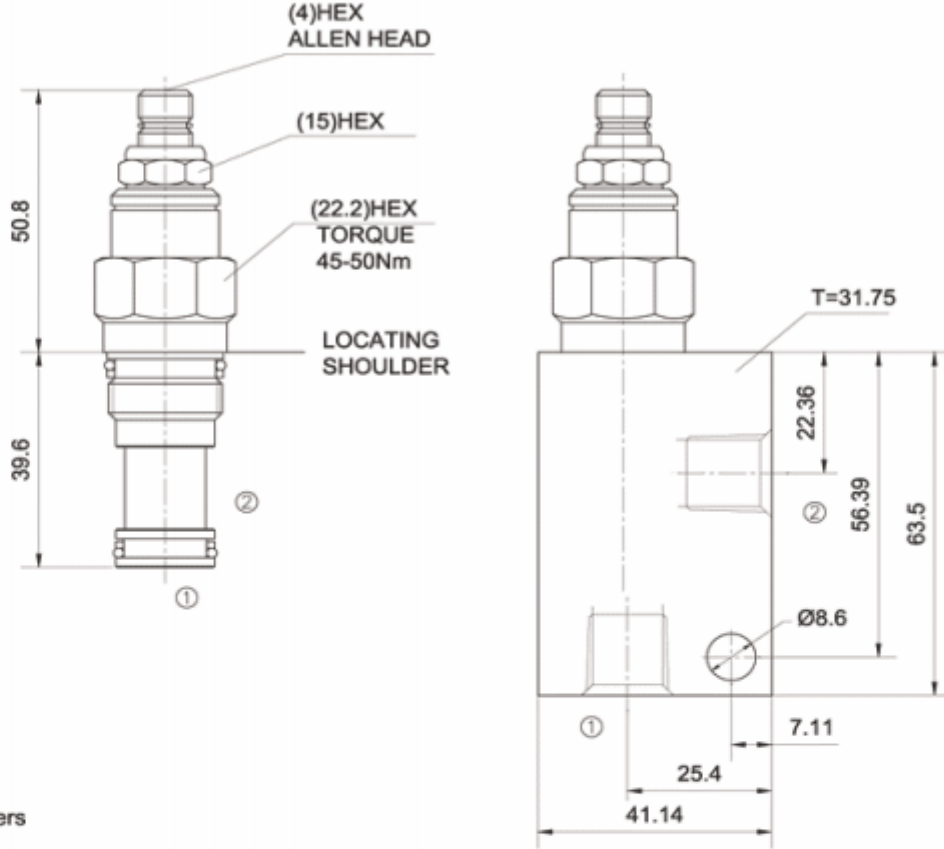
For other fluid compatibility, consult factory.

Cavity : CBT-4, see page 226

Body Material : steel rated at 350 Bar.

YERLEŞTİRME ÖLÇÜLERİ

INSTALLATION DIMENSIONS



Unit=Millimeters

TO ORDER

	LRP * E - * * * - * *	
FAST-ACTING,PILOT OPERATED BALANCED PISTON RELIEF VALVE		BODY PORTING 3N = 3/8 PTF 6T = SAE 6 8T = SAE 8 Other porting is available.
FLOW E = 95 L/min.		(Omit for Cartridge only) Seal Kits N = Buna N V = Viton
CONTROL L=Standard Screw Adjustment		SPRING RANGE A = 1000-3000psi(7-210bar) preset: 1000psi(70bar) B = 50-1500psi(3.5-105bar) preset: 1000psi(70bar) C = 150-6000psi(10.5-420bar) preset: 1000psi(70bar) D = 25-800psi(1.7-55bar) preset: 400psi(30bar) E = 25-400psi(1.7-28bar) preset: 200psi(14bar) W = 150-4500psi(10.5-315bar) preset: 1000psi(70bar)

Hidrosam Hidropar Hidrolik Pnömatik Elektrik San.Tic. Ltd
Alaaddinbey mah. 623 sok. Şam 1 plaza B blok No:2/d Nilüfer/BURSA TURKEY

Tel:+90224 441 8877 Fax:+90224 441 0333

info@hidrosam.com www.hidrosam.com