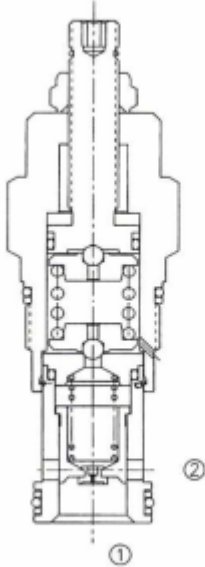
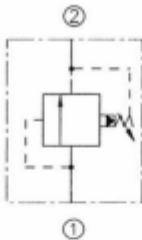


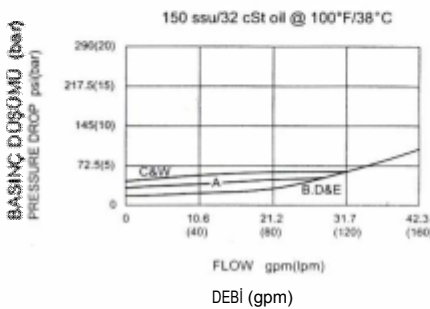
## LRPGE - Hızlı Hareket Pilot Uyarılı, Dengeli Piston Emniyet Valfi LRPGC - Pilot Uyarılı Düz ve Hareketsiz Emniyet Valfi



### SYMBOL



### PRESSURE DROP VS. FLOW



## LRPGE

Fast-Acting, Pilot-Operated, Balanced Piston Relief Valve

## LRPGC

Pilot-Operated smooth and quiet relief valve

### OPERATION

The valve are normally closed, pressure-limiting valves used to protect hydraulics components from pressure transients. Fast opening and closing is gained at the expense of smoothness. When the pressure at the inlet (port ①) reaches the valve setting, the valve starts to open to tank (port ②), throttling flow to limit the pressure rise. These valves have low pressure rise vs. flow and are very fast.

### FEATURES

- Suitable for use in cross port relief circuits. If used in cross port relief circuits, consider spool leakage.
- Not suitable for use in load holding applications due to spool leakage.
- Back pressure on the tank port (port 2) is directly additive to the valve setting at a 1:1 ratio .
- Hardened poppet and seat for long life.
- Compact size.

### ÖZELLİKLER

- Karşı devre tahliyelerindeki uygunluk.Eğer karşı devrede legaj göz önüne alınırsa
- Bobindeki legaj eksikliğinden dolayı yük binmelerindeki karşılmalarda kullanılmak için uygun değildir
- 2 nolu tank hattındaki geri basıncı doğrudan valfe yerleştirilen 1:1 oranlı ilavedir.
- Uzun ömür için sertleştirilmiş hassas popet ve yuva
- Kompakt Boyut

### SPECIFICATIONS

**Max. Operating Pressure :** 350 Bar

**Flow :** See PRESSURE DROP VS.FLOW graph.

**Internal Leakage :** 50 cc/min. at 70 Bar.

Factory Pressure Setting Established at 4gpm(15L/min).

**Response Time - Typical :** 2 ms(LRPGE);10ms(LRPGC)

**Standard Spring Ranges :**

LRPGE,	LRPGC:	A	7 to 210 Bar ,	Preset=70 Bar
		B	3.5 to 105 Bar ,	Preset=70 Bar
		C	10.5 to 420 Bar ,	Preset=70 Bar
		D	1.7 to 55 Bar ,	Preset=30 Bar
		E	1.7 to 28 Bar ,	Preset=14 Bar
LRPGC:	Q	W	10.5 to 315 Bar ,	Preset=70 Bar
		N	4 to 55 Bar ,	Preset=30 Bar
		Q	4 to 25 Bar ,	Preset=14 Bar

**Temperature :** -30 ° F to +250 ° F(-35°C to +120°C)

**Fluids :** Mineral-based fluids.

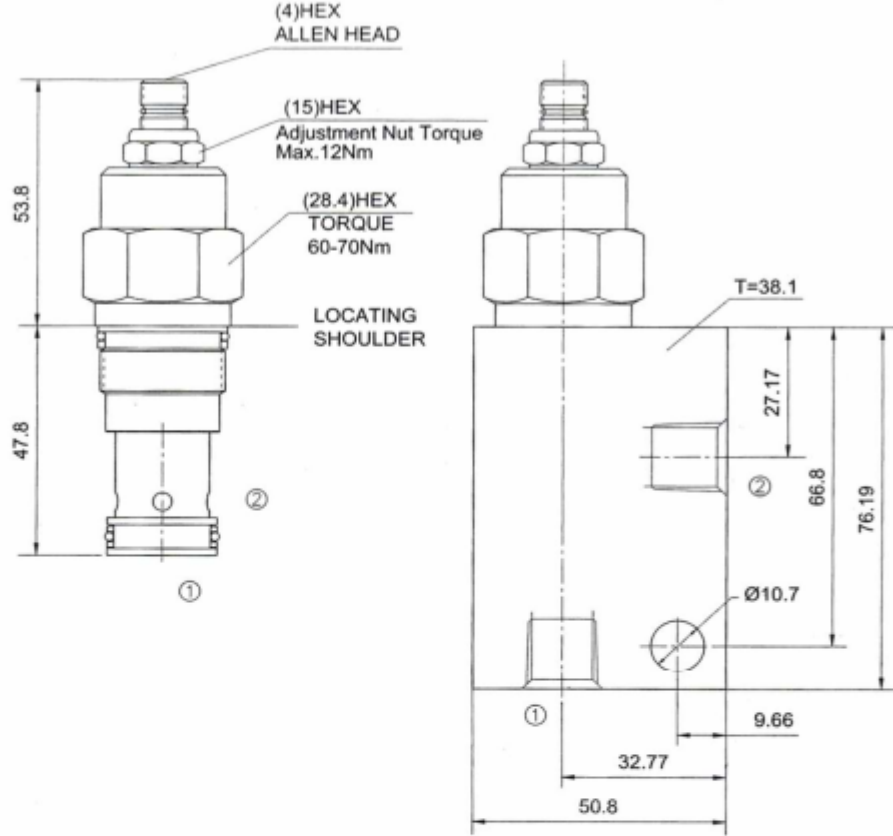
For other fluid compatibility, consult factory.

**Cavity :** CBT-5,see page 269

**Body Material :** steel rated at 350 Bar.

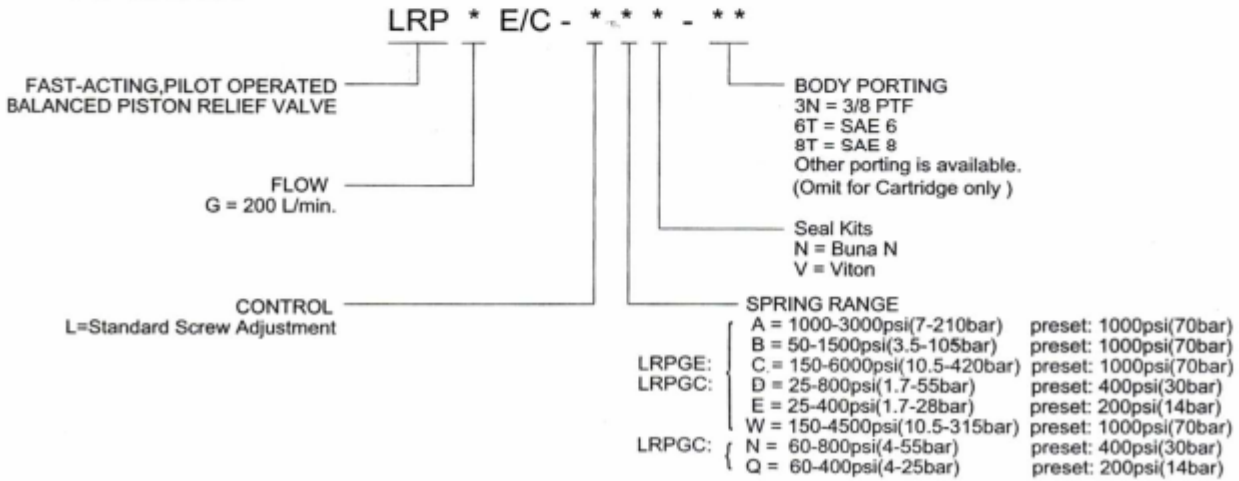
## YERLEŞTİRME ÖLÇÜLERİ

### INSTALLATION DIMENSIONS



Unit=Millimeters

### TO ORDER



Hidrosam Hidropar Hidrolik Pnömatik Elektrik San.Tic. Ltd

Aladdinbey mah. 623 sok. Şam 1 plaza B blok No:2/d Nilüfer/BURSA TURKEY

Tel:+90224 441 8877 Fax:+90224 441 0333

[info@hidrosam.com](mailto:info@hidrosam.com) [www.hidrosam.com](http://www.hidrosam.com)