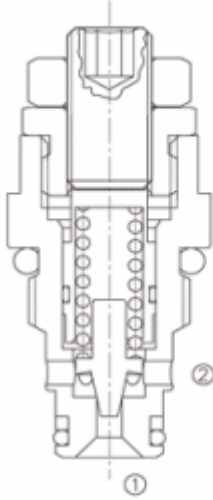


Ayarlanabilir, Direk Hareketli Kartriç Emniyet valfi

LRV-08



Adjustable, Direct-Acting Cartridge Relief Valve

OPERATION

The valve prevents flow from ① to ② until the set crack pressure at ① is achieved. The poppet then unseats allowing flow from ① to ② protecting the circuit from over pressurization.

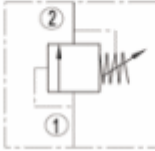
FEATURES

- Fast response to pressure surges.
- Hardened poppet and seat for long life.
- Adjustment may be locked in place.
- Adjustment prevents spring from going solid.
- Industry common cavity.
- Compact size.

ÖZELLİKLER

- Basınç yükselmesinde hızlı tepki
- Uzun ömür için sertleştirilmiş yuve ve popet
- Kilitlenebilir ayar noktası
- Katı hareketini yaylar ayarlanarak önleme
- Endüstriyel standartlarda kavite
- Kompakt Boyut

SYMBOL



SPECIFICATIONS

Operating Pressure : 270 Bar

Flow : See PRESSURE DROP VS. FLOW graph.

Internal Leakage : 5 drops/min.MAX.to 80% of nominal setting

Spring Ranges :

40 TO 270 BAR; preset : 160 BAR

Temperature : -30°F to +250°F (-35°C to +120°C).

Recommended Filtration : ISO 19/15

Fluids : Mineral-based fluids.

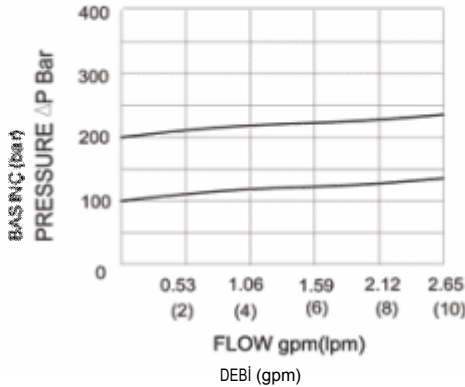
For other fluid compatibility consult factory.

Cavity : 08-2, see page 264

Body Material : Anodized 6061T6 aluminum
alloy rated at 207 Bar .

PRESSURE DROP VS. FLOW

32 cSt/150 ssu oil at 38°C



Hidrosam Hidropar Hidrolik Pnömatik Elektrik San.Tic. Ltd

Alaaddinbey mah. 623 sok. Şam 1 plaza B blok No:2/d Nilüfer/BURSA TURKEY

Tel:+90224 441 8877 Fax:+90224 441 0333

info@hidrosam.com www.hidrosam.com

