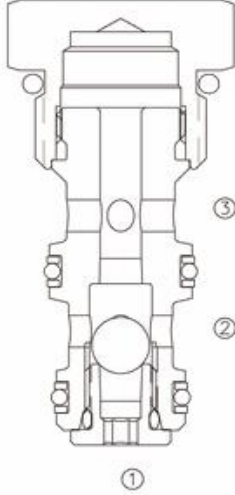


Bilyalı

LSLV-08



Ball Type, Cartridge Shuttle Valve

OPERATION

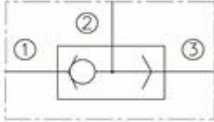
The valve will allow flow from the higher pressure of ① or ③ port to the ② port. The valve is commonly used to direct oil from the pressure side of a bidirectional hydraulic motor to a pressure-released hydraulic brake.

FEATURES

- Rapid response to load direction changes.
- Compact size.

ÖZELLİKLER

SYMBOL



SPECIFICATIONS

Operating Pressure : 240 Bar

Proof Pressure : 390bar

Flow : See PRESSURE DROP VS. FLOW graph.

Internal Leakage : 5 drops/min max. at 207 Bar

Temperature : -30°F to +250°F (-35°C to +120°C)

Recommended Filtration :

Critical Application – ISO 16/12

Non-Critical Application – ISO 19/15

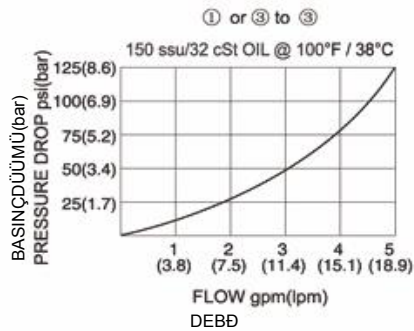
Fluids : Mineral-based fluids.

For other fluid compatibility, consult factory.

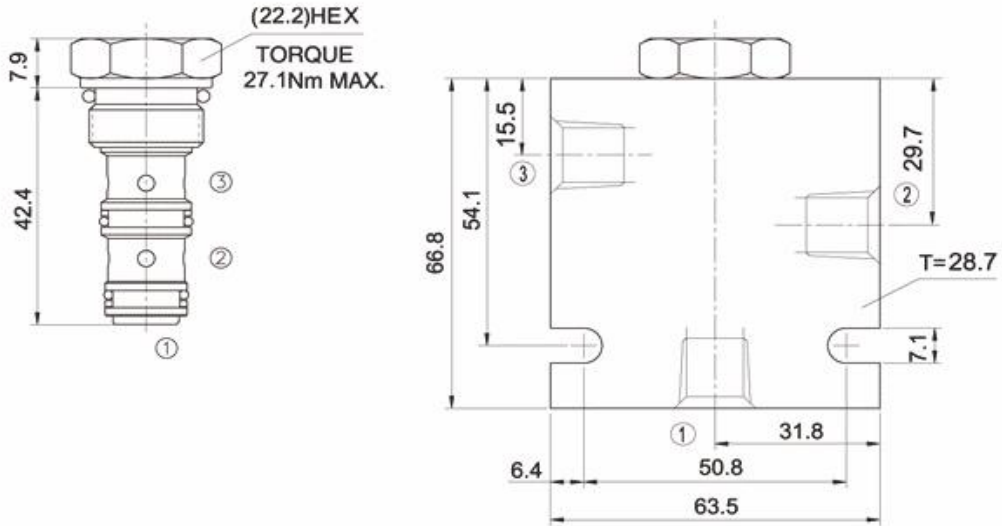
Cavity : 08-3 , see page 264

Body Material : Anodized 6061T6 aluminum alloy rated at 207 Bar.

PRESSURE DROP VS. FLOW



YERLE
INSTALLATION DIMENSIONS



Unit=Millimeters

TO ORDER

