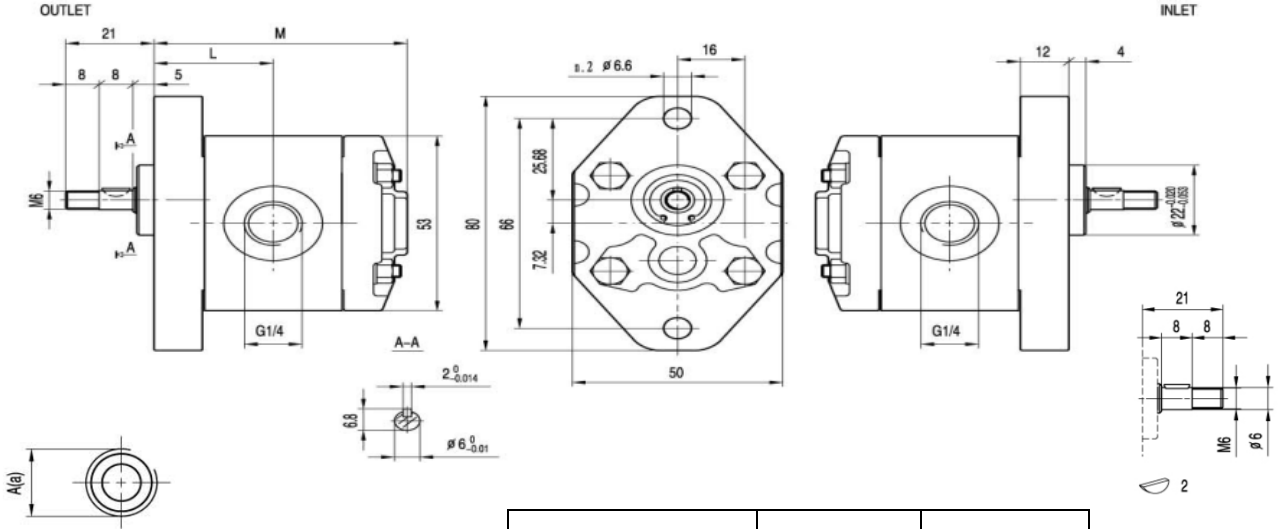


PS- 0,19 A

MAXTOR DİŞLİ POMPA (SMALL SERİ)



G1/4
5.4±0.5Nm.
G1/4 thread depth 9.
To mount the pump, n.4 M5 screws,
with a torque wrench setting fixed
at 5.4±0.5Nm.
Shaft M6 nut, with a torque wrench
setting fixed at 7 Nm.



14

TYPE	INLET	OUTLET
PS...0.19 T PS...2.00	G 1/4	G 1/4

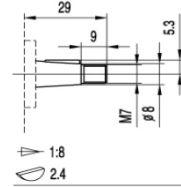
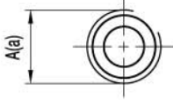
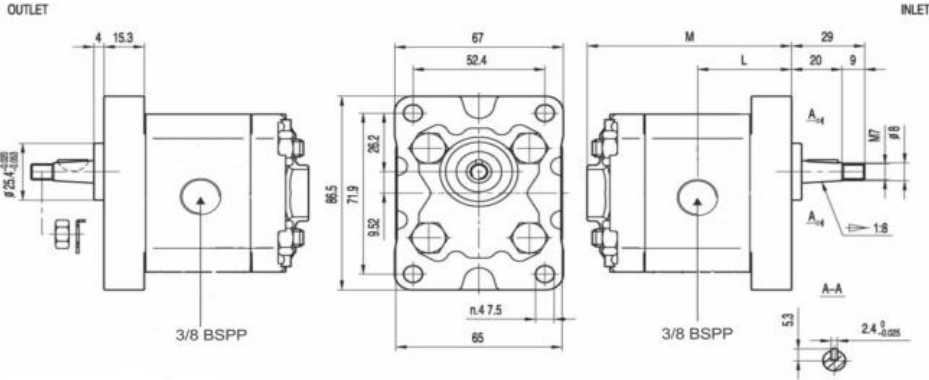
Small Tip	Deplasmanı (cc/dak)	Çalışma basıncı		Maks. Hız (r/min)	Min. Hız (r/min)	Ölçüler	
		Sürekli bar	Pik bar			M mm	L mm
PS-0.19-A-R-0,5-P-14-S	0.19	200	250	7000	1000	60	27,2
PS-0.26-A-R-0,5-P-14-S	0.26	200	250	7000	1000	60.5	27,5
PS-0.38-A-R-0,5-P-14-S	0.38	200	250	7000	1000	61.5	28,0
PS-0.50-A-R-0,5-P-14-S	0.50	200	250	7000	1000	62.5	28,5
PS-0.65-A-R-0,5-P-14-S	0.65	200	250	7000	1000	63.5	29,0
PS-0.75-A-R-0,5-P-14-S	0.75	200	250	7000	1000	64.5	29,5
PS-0.88-A-R-0,5-P-14-S	0.88	200	250	7000	1000	65.5	30,0
PS-1.00-A-R-0,5-P-14-S	1.00	200	250	6000	850	66.5	30,5
PS-1.25-A-R-0,5-P-14-S	1,25	200	250	5000	700	68.5	31,5
PS-1.50-A-R-0,5-P-14-S	1,50	200	250	4000	600	70.5	32,5
PS-1.75-A-R-0,5-P-14-S	1,75	180	230	4000	600	72.5	33,5
PS-2.00-A-R-0,5-P-14-S	2.00	160	210	3000	500	74.5	34,5



PM- 0,8 B MAXTOR DİŞLİ POMPA (MİNİ SERİ)



M6 thread depth 12.
To mount the pump, n.4 M8 screws,
with a torque wrench setting fixed
at 27±3 Nm.
Shaft M7 nut, with a torque wrench
setting fixed at 8 Nm.



38

TYPE	INLET	OUTLET
	A	a
PM...0.8 -- PS...8.0	G 3/8	G 3/8

Mini Tip	Deplasmanı (cc/dak)	Çalışma basıncı		Maks. Hız (r/min)	Min. Hız (r/min)	Ölçüler	
		Sürekli bar	Pik bar			M mm	L mm
PM-0,8-B-R-1-C-38-C	0,8	230	270	6000	1000	73,5	32,8
PM-1,1-B-R-1-C-38-C	1,1	230	270	6000	1000	74	33,0
PM-1,6-B-R-1-C-38-C	1,6	230	270	6000	1000	76	34,0
PM-2,1-B-R-1-C-38-C	2,1	230	270	6000	1000	78	35,0
PM-3,2-B-R-1-C-38-C	3,2	210	250	5000	800	82	37,0
PM-4,2-B-R-1-C-38-C	4,2	210	250	4000	800	86	39,0
PM-5,8-B-R-1-C-38-C	5,8	190	230	3000	600	92	42,0
PM-8,0-B-R-1-C-38-C	8,0	160	200	2100	600	100	46,0



HİDROSAM HİDROPAR

PD- 10 B

MAXTOR DİŞLİ POMPA (MİDİ SERİ)



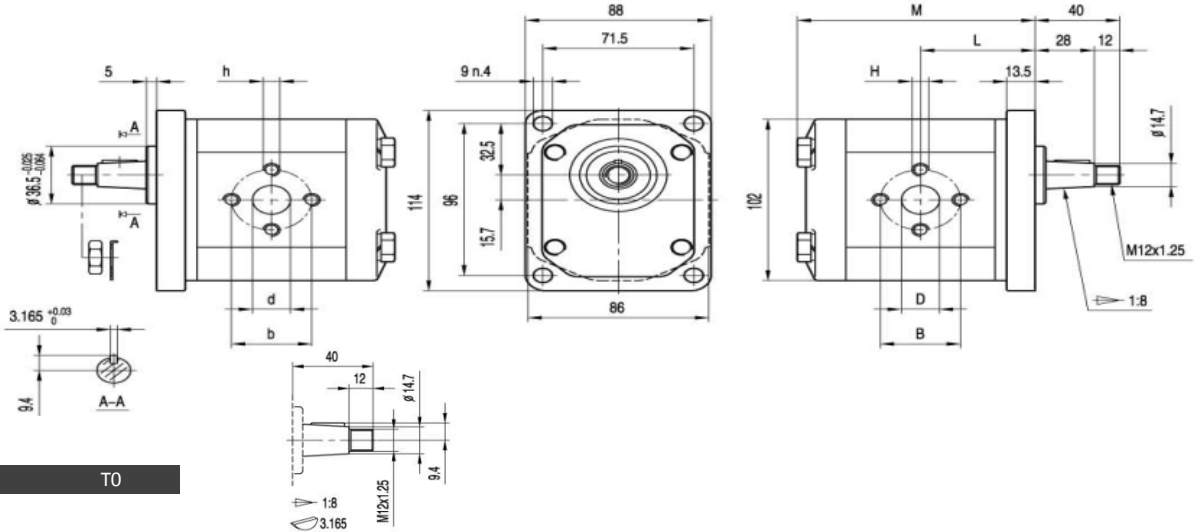
M6 thread depth 13. M8 thread depth 17.

To mount the pump, n.4 M10 screws,
with a torque wrench setting fixed
at 70±75 Nm.

Shaft M12x1,25 nut, with a torque wrench
setting fixed at 50 Nm.

OUTLET

INLET



Midi Tip	Deplasman	Çalışma Basıncı		Maks. Hızı	Min. Hızı	Ölçüler			Ölçüler				
		cc/dak	Sürekli			Pik	M	L	B	D	H	b	d
PD-10-B-R-2-C-F-S	10	270	300	3000	500	102.6	49.3	40	20	M8	30	13	M6
PD-12-B-R-2-C-F-S	12	270	300	3000	500	105.9	51	40	20	M8	30	13	M6
PD-14-B-R-2-C-F-S	14	250	280	4000	500	109.3	52.7	40	20	M8	30	13	M6
PD-16-B-R-2-C-F-S	16	250	280	4000	500	112.7	54.4	40	20	M8	30	13	M6
PD-18-B-R-2-C-F-S	18	250	280	3600	400	116	56	40	20	M8	30	13	M6
PD-20-B-R-2-C-F-S	20	220	250	3200	400	119.3	57.7	40	20	M8	30	13	M6
PD-22-B-R-2-C-F-S	22	220	250	3000	400	122.6	59.3	40	20	M8	30	13	M6
PD-25-B-R-2-C-F-S	25	200	230	3000	400	127.6	61.8	40	22	M8	30	13	M6
PD-28-B-R-2-C-F-S	28	180	200	2500	400	132.6	64.3	40	22	M8	30	13	M6
PD-30-B-R-2-C-F-S	30	160	180	2500	400	135.9	66	40	22	M8	30	13	M6

HİDROSAM HİDROPAR

PX- 33 B

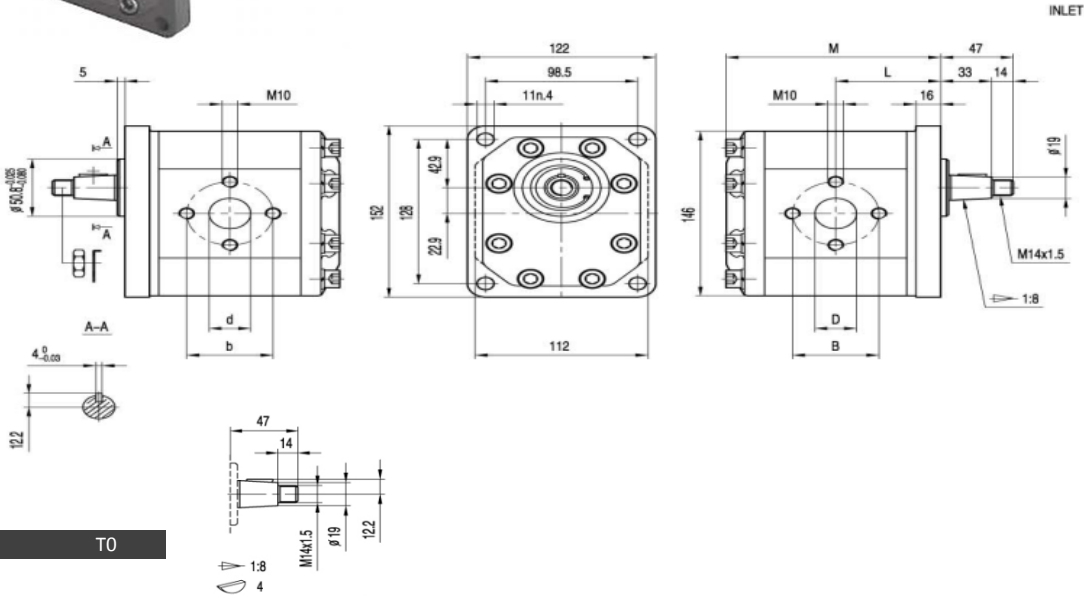
MAXTOR DİŞLİ POMPA (MAXİ SERİ)



M6 thread depth 13. M8 thread depth 17.

To mount the pump, n.4 M10 screws,
with a torque wrench setting fixed
at 70±75 Nm.

Shaft M12x1,25 nut, with a torque wrench
setting fixed at 50 Nm.



Maxi Tip	Deplasman	Çalışma Basıncı		Maks. Hızı	Min.hızı	Ölçüler			Ölçüler		
		Sürekli	Pik			M	L	B	D	b	d
	cc/dak					mm	mm	mm	mm	mm	mm
PX-33-B-R-3-C-F-S	33	230	270	3000	500	139	68	56	27	56	19
PX-39-B-R-3-C-F-S	39	230	270	3000	500	146	72	56	27	56	19
PX-46-B-R-3-C-F-S	46	230	270	3000	500	152	75	51	27	51	27
PX-50-B-R-3-C-F-S	50	220	260	3000	500	156	77	56	27	56	27
PX-55-B-R-3-C-F-S	55	200	250	2800	400	160	79	62	33	51	27
PX-63-B-R-3-C-F-S	63	200	250	2800	400	168	83	62	33	51	27
PX-71-B-R-3-C-F-S	71	180	250	2500	400	175	86	62	33	51	27