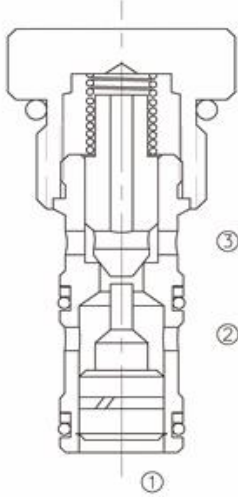


Pilotla Açık, Poppet-Tip Kartriç Çekvalf LPC-10



Pilot To Open, Poppet-Type Cartridge Check Valve

OPERATION

Pressure at ② overcomes the spring-bias poppet and allows free flow to ③. Flow in the opposite direction, from ③ to ②, is blocked by the poppet. When the required pilot pressure is achieved at ①, the poppet unseats and allows flow between ③ and ②. The pilot piston area to poppet seat area ratio is 3.5 to 1.

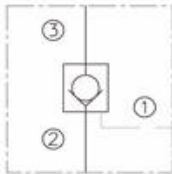
FEATURES

- Hardened poppet and seat for long life.
- Low leakage .
- Industry common cavity.
- Compact size.

ÖZELLİKLER

- Uzun ömür için sertleştirilmiş hassas poppet ve yuva
- Düşük sızıntı
- Endüstriyel standartlarda kavite
- Kompakt boyut

SYMBOL



SPECIFICATIONS

Operating Pressure : 250 Bar

Flow : See PRESSURE DROP VS. FLOW graph.

Internal Leakage : 2 drops/min. max. at 250 Bar

Crack Pressures : 1.7=1.7Bar

3.4=3.4Bar

6.9=6.9Bar

Pilot Ratio : 3.5 : 1

Temperature : -30°F to +250°F (-35°C to +120°C)

Recommended Filtration: Critical Application – ISO 16/12

Non-Critical Application – ISO 19/15

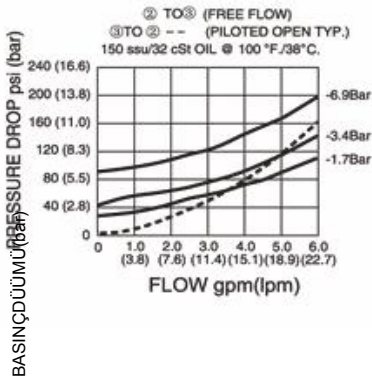
Fluids : Mineral-based fluids.

For other fluid compatibility, consult factory.

Cavity : 10-3, see page 265

Body Material : Anodized 6061T6 aluminum
alloy rated at 207 Bar.

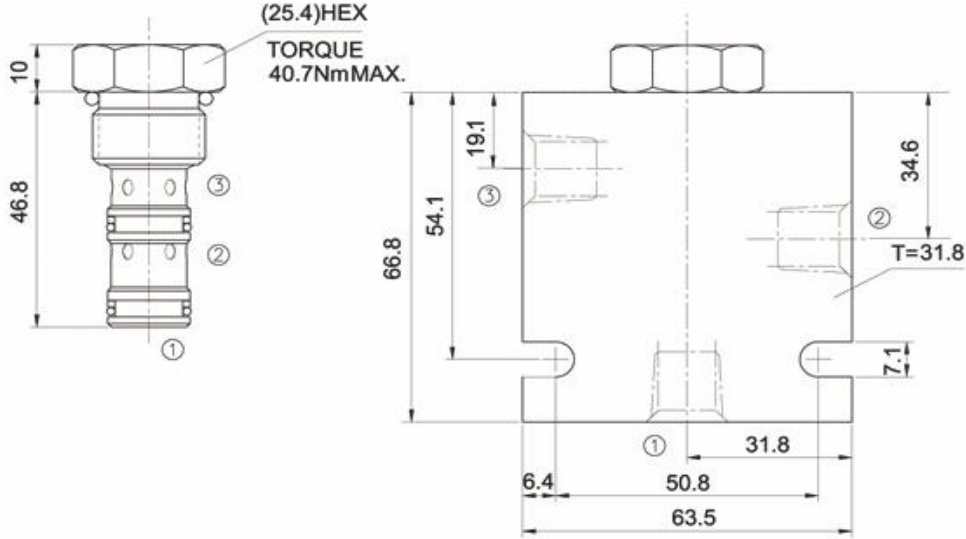
PRESSURE DROP VS. FLOW



DEBD

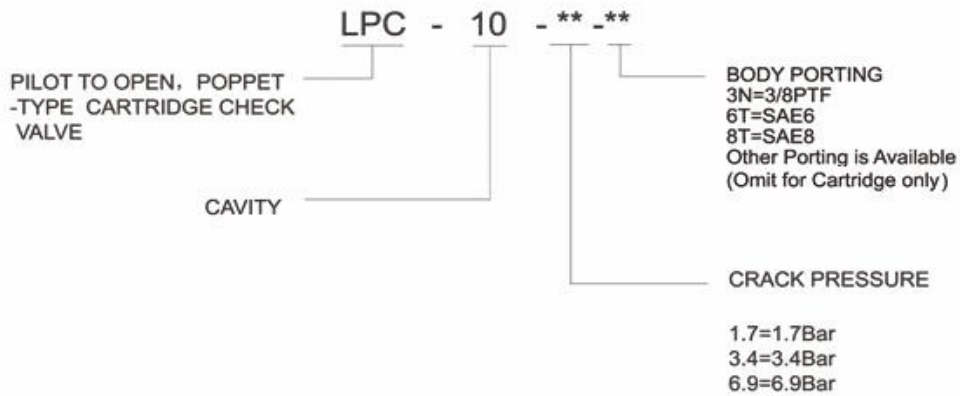
YERLEŞTİRME ÖLÇÜLERİ

INSTALLATION DIMENSIONS



Unit=Millimeters

TO ORDER



Hidrosam Hidropar Hidrolik Pnömatik Elektrik San.Tic. Ltd
Alaaddinbey mah. 623 sok. Şam 1 plaza B blok No:2/d Nilüfer/BURSA TURKEY

Tel:+90224 441 8877 Fax:+90224 441 0333

info@hidrosam.com www.hidrosam.com